

Royal Wootton Bassett Town F.C.

Bracknell Town F.C.

ROYAL WOOTTON BASSETT TOWN F.C.

| Home Team Squad | | | Played No. | Sub |
|-----------------|---------|-----------|------------|-----|
| 1 | Curtis | Meare | | |
| 2 | Dan | Comer | | |
| 3 | Dale | Richards | | |
| 4 | Adam | Corcoran | | |
| 5 | Nathan | Hawkins | | |
| 6 | Matt | Cheetham | | |
| 7 | Dan | Bailey | | |
| 8 | Harvey | Scholes | | |
| 9 | Steve | Robertson | | |
| 10 | Sam | Packer | | |
| 11 | Stephen | Olphert | | |
| 12 | George | Drewitt | | |
| 14 | Joe | Hiscock | | |
| 15 | Tyler | Sheppard | | |
| 16 | Ryan | Thomas | | |
| 17 | Martin | Sinclair | | |
| 18 | Luke | Kuczynski | | |
| 19 | Daniel | Smith | | |
| 20 | Hugo | Vivash | | |
| 21 | | | | |
| 22 | | | | |
| 23 | | | | |
| 24 | | | | |

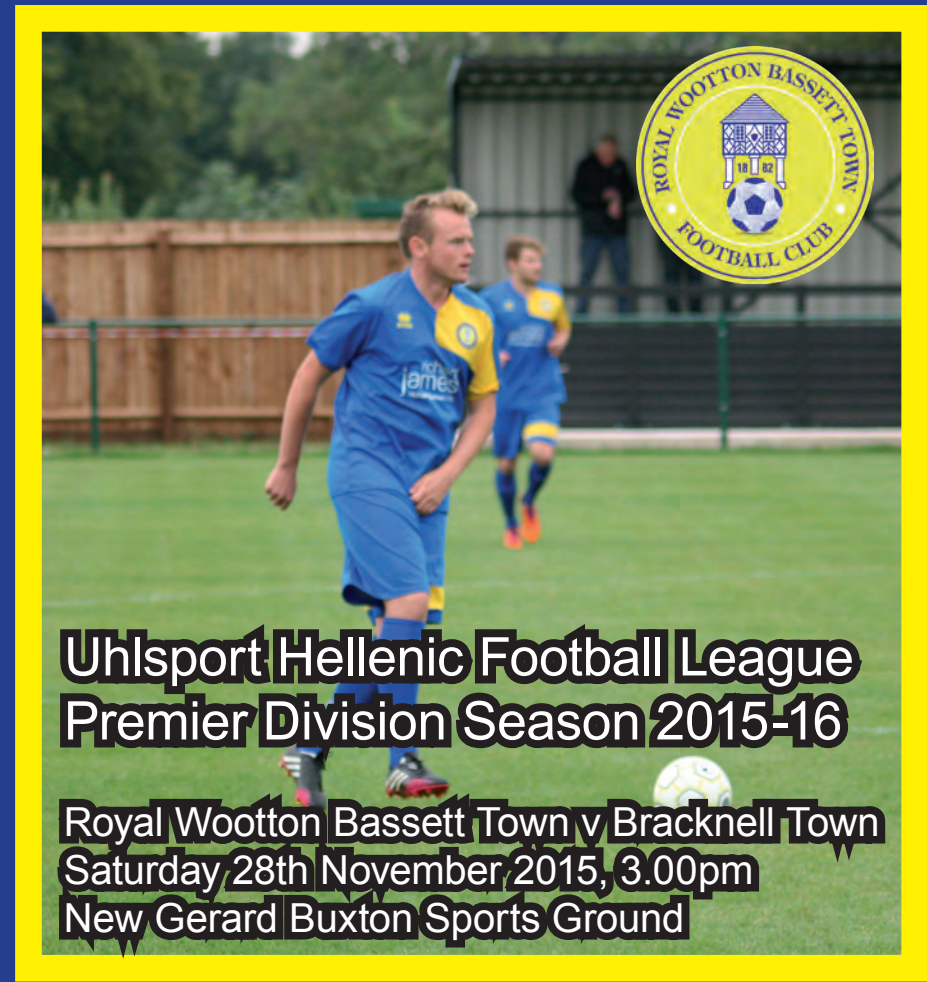
| Visitors Team Squad | | | Played No. | Sub |
|---------------------|---------|-------------|------------|-----|
| 1 | Garry | Aulsberry | | |
| 2 | Danny | Oliphant | | |
| 3 | Adam | Kennedy | | |
| 4 | Dave | Fenton | | |
| 5 | Michael | Watson | | |
| 6 | Kennie | Chamberlain | | |
| 7 | Edward | Chappe | | |
| 8 | Tom | Nugent | | |
| 9 | Adam | Cornell | | |
| 10 | Johnie | Dyer | | |
| 11 | Callum | Whitty | | |
| 12 | Joshua | Delander | | |
| 14 | Gareth | Brown | | |
| 15 | Ryan | Coupland | | |
| 16 | Carl | Davies | | |
| 17 | Luke | Hanley | | |
| 18 | George | Lock | | |
| 19 | Daniel | Money | | |
| 20 | Ben | Hall | | |
| 21 | | | | |
| 22 | | | | |
| 23 | | | | |
| 24 | | | | |

Dugout Team
Manager: Paul Braithwaite
Assistant: Chris Green

Dugout Team
Manager: Mark Tallentire
Coach:
Physio:

Match Officials
Referee: Adrian Matthews
Assist. Ref (Red Flag): Kevin Barnett
Assist. Ref (Yellow Flag): David Fiddy

Next Home Games
 Wed 02-Dec-15 v Lydney Town (Perpetua Print Floodlit Cup 3rd Round, 7.45pm)



**Uhsport Hellenic Football League
 Premier Division Season 2015-16**

**Royal Wootton Bassett Town v Bracknell Town
 Saturday 28th November 2015, 3.00pm
 New Gerard Buxton Sports Ground**



**Keep up to date with
 RWBTFC on Facebook,
 Twitter or the club's
 website:
www.rwbtfc.co.uk**



**Official Matchday Programme
 13**

£1.50

Club Officials Season 2015-16



(founded 1882)

Royal Wootton Bassett Town F.C.
New Gerard Buxton Sports Ground
Brinkworth Road
Royal Wootton Bassett
Wiltshire SN4 8DS

Tel : (01793) 853880, www.rwbtfc.co.uk

| | |
|-------------------------------|---|
| President: | Mark Smedley |
| Chairman: | Andy Walduck |
| Email: | andy.walduck@wbtfc.co.uk |
| Vice Chairman: | Danny Groom |
| Secretary: | Ian Thomas |
| Email: | ian.thomas@wbtfc.co.uk |
| Match Secretary: | Paul Curtis |
| Treasurer : | Dave Topping |
| Club Development Officer: | Jeff Tidy |
| Head of Senior Section: | Vacant |
| First Team Manager: | Paul Braithwaite |
| First Team Assistant Manager: | Chris Green |
| First Team Coach: | Rich Hunter |
| Reserve Team Managers: | Dave Terry and Danny Groom |
| Ladies Team Manager: | Becky Gammon |
| Head of Youth Section: | Peter Yeardley |
| Deputy Head of Youth: | Nigel Deane |
| Youth Section Secretary: | Hayley Gillie |
| Email: | hayley.gillie@wbtfc.co.uk |
| U18 Floodlit Team Manager: | Paul Gerrish |
| Marketing Manager: | Vacant |
| Email: | |
| Press Officer: | Stuart Smedley |
| Email: | stuart.smedley@wbtfc.co.uk |
| Website Editor and Designer: | Scott Smedley |
| Email: | scott.smedley@wbtfc.co.uk |
| Programme Editor: | Mark Smedley |
| Email: | mark.smedley@wbtfc.co.uk |
| Welfare Officer: | Derek Edgington |
| Life Members: | Micky Woolford (1995) Rod Carter (2008) Roger Williamson (2008) Paul Harrison (2012) Pete Yeardley (2012) Ron Stone (2013) |

SWINDON • LONDON • GLASGOW



Cats HQ Reception

COLOUR DIGITAL COLOUR DIGITAL COLOUR
COPYING B&W COPYING B&W COPYING
24x7 PRINT 24x7 PRINT 24x7 PRINT
WEB ORDERING ONLINE WEB ORDERING
SOLUTIONS DIGITAL SOLUTIONS
SERVICE 24x7 SERVICE 24x7 SERVICE
WE SELL XEROX COPIERS & PRINTERS

Cats Solutions Ltd Two Rushy Platt, Swindon, SN5 8WQ

01793 432913

www.cats-solutions.com

Programme Printing & Sponsor



Meet your local team....

Richard James are pleased to have recently joined the Royal Wootton Bassett High Street. As you may or may not know, we have recently taken over the reigns at Select Properties whilst Andy and Kerry the former owners settle in to their retirement (lucky them!).

With our network of six additional offices located throughout Swindon and its surrounding villages, Richard James have been helping people move in the Wiltshire area for over 23 years. We have a large team of local experienced staff all looking forward to getting to know and become part of the Royal Wootton Bassett community.

We are very proud to have been asked to support the Royal Wootton Bassett Football Club and are looking forward to a successful season ahead.

Alex Hornby
Managing Director

Are you thinking about moving?

Whether you are thinking about selling or letting, contact us today for an up to date market appraisal of your home, or find us online below and use our online valuation tool to help you start your move.

t: 01793 855 117
w: richardjames.info

111 High Street, Royal Wootton Bassett, Wiltshire, SN4 7AU
Sales & Lettings: 01793 855117
rwb@richardjames.info

richardjames.info

richard
james
sales • lettings • new homes



Jo Bunkasem



Josh McHugh



Deborah Reay



Rebecca Barrett

Editorial & RWBTFC News

Welcome to Bracknell Town

A warm welcome to Bracknell Town who have made the journey along the M4 for this afternoon's UHlsport Hellenic League Premier Division fixture. We hope all from Bracknell enjoy their second visit to our new ground and we wish them a safe journey home.

Last season Bracknell Town had their best ever season in the Hellenic Premier League finishing in 9th place mainly due to the goal scoring feats of Shane Cooper-Clarke who scored an impressive 36 goals. He was the difference between the two sides when we met earlier this season here at the New Gerard Buxton Ground in the FA Cup when he scored twice in Bracknell's 2-0 win. Since that game he has moved on to join Thatcham Town, this after I had praised him for his loyalty in the editorial for that FA Cup game.

In the two games with us last season it is safe to say that apart from one minute at the end of the away fixture Bracknell had the better of things. At Cirencester Bracknell left with all 3 points following an easy 5-0 win. In the return game at Larges Lane we were 2-0 with 90 minutes on the clock. Steve Yeardley then headed in from a Richie Carter cross to make it 2-1. At that stage in the game, it seemed as though the captain's fifth goal of the season would merely serve as nothing more than a consolation strike. Yet Bassett had other ideas. They instantly forced a corner and, in desperation, filled the box with all eleven players on the pitch, 'keeper Ben Mitchell included. With a third Bracknell goal a certainty should they have been able to clear, the delivery had to be a good one. That it was, with the ball sent to the heart of the congested penalty area where, after a brief scramble, James Skinner emerged to gleefully fire home and steal a point in a game that just minutes earlier appeared as though it would end with Bracknell taking all three.

Our defeat earlier in the season in the FA Cup was a rare success for Bracknell this season. They currently sit in 19th place in the table with just 2 league wins to their name, these coming in games against Abingdon United and Brackley Town Saints. They have fared better in cup competitions, in addition to that FA Cup win over us they have also defeated Brimscombe & Thrupp (FA Vase), Rayners Lane (Floodlit Cup), Chinnor (Bluefin Challenge Cup) and Hook Norton (FA Vase).

Bracknell are now under new management with former Binfield manager Mark Tallentire taking over at Larges Lane. He started the season as manager at Burnham and has brought players across with him from both Burnham as well as some ex-Binfield players. We can expect an improvement in Bracknell's results as he strengthens the squad but hopefully that will happen after today's game. As with the Milton game last week this is the type of fixture we need to be winning.

Last Saturday

After the fantastic win against Thatcham Town we were brought back down to earth last Saturday when we lost 2-0 at home against a Milton side who were below us in the table. Despite having the best of the play in the first half we found ourselves down at the break as Milton scored a stunning goal with one of the few chances they created. To be honest keeper Luke probably made the strikers decision for him by being so far off his line but it still needed some skill to execute. The second half followed the pattern of the first with us creating the best chances but failing to find the net. The best chances fell to Sam Packer but it was just not Sam's day. It was just one of those games that happen sometimes when the goals just don't come. If we had played all night to when the social evening finished in the bar we probably still wouldn't have scored. We just need to no put this behind us now and get back to winning ways. I actually thought Milton were a reasonable side and surprised by their lowly position. The guy who game on as first substitute for them was also a handful and I am sure he would have started if he had arrived on time. We will just need to ensure we secure the points when we play Milton at their place.

Editorial & RWBTFC News

Ladies Team

The Ladies side continued their recent upturn in fortune with a 3-1 win at home against St Nicholas on Sunday. Two goals from Laura Jefferies and one from Laura Gammon did the damage.

Reserves and Under 18's

The Reserves game against Trowbridge last weekend was postponed. Prior to that on Thursday evening the Under 18's secured their 5th consecutive win to virtually sew up the North Division League title. However, on Tuesday they fell to their first defeat of the season going down 2-1. With two games to play a point in the game against Shrivenham would be enough to secure the title but I am sure that Paul will be looking to win both of the last 2 games.

Youth Section Race Night

A youth section race night will be taking place in the clubhouse at the New Gerard Buxton Sports Ground this evening (Saturday November 28th). The event has been organised by the club's Under 13 Yellows to raise vital funds to support the youth section. Doors will open at 7pm, with the first race starting at 7.30pm.

There will be eight races in all, with the seventh being a 'tricast' race and the final one an auction race in which those attending will bid to own each of the horses running. There is the chance to own horses and jockeys for the first seven races. These will cost £2.50, with additional prizes on the night for the winning owners and jockeys. You can sponsor a race too and have your business details read out on the night to all in attendance. To purchase horses and jockeys, become a sponsor for any of the races or for any other further information you may require, please contact Lynn on 07710 845024. Please note that attendance at the race night is limited to 150 people.

RWBTFC Support 'Doing It For Dan Virtual Run'

In memory of youth section player Dan Climance, Royal Wootton Bassett Town are supporting the 'Doing it for Dan Virtual Run' initiative, which is raising money for road safety charity Brake.

Back in June Dan was tragically killed in a road traffic accident whilst out riding his bike. In keeping Dan's memory alive, one of his friends has set up a Virtual Run to raise money in aid of Brake, the road safety charity. To help raise as much money as possible, Dan's team, the under 12 Blues, took part in the Virtual Run during Road Safety Week. At their training session on Monday the players and parents took part in a 5k run and relay. A Just Giving page has been set up for people to donate to Brake. All donations are gratefully accepted for this extremely worthy cause in memory of a special teammate and friend.

Home Games

Today is the second in a series of six home games on the bounce. Whilst probably great from a fans perspective it is tough in terms of churning out programmes. Any contributions by the way of articles or features would be gratefully appreciated. If possible I want to maintain the same number of pages as normal but with work commitments this maybe a challenge but I will do my best on this front.

Programme

Looking at what is included in the programme tonight. The player featured in the First Team player profile is Dale Richards. The defunct former opponents feature this week showcases the Melksham based side Spencer Moulton and there is the usual article from a journalist from the Non-League paper. Enjoy the game and hopefully three more vital points for Royal Wootton Bassett Town FC.

Mark



uhlsport® Title Sponsors Of The Hellenic Football League

uhlsport® UK

Radio House
Bampton Business Centre (South)
Bampton
OXON OX18 2AN

www.uhlsport-uk.co.uk



Senior Honours List



- 1902/03 Wiltshire Senior Cup Runners-up
- 1902/03 Advertiser Cup Runners-up
- 1903/04 Wiltshire Senior Cup Runners-up
- 1905/06 Wiltshire County League Runners-up
- 1930/31 Calne & District League Runners-up
- 1931/32 Calne & District League Champions
- 1933/34 Vale of White Horse Cup Winners
- 1934/35 Calne & District League Champions
- Calne & District League Cup Winners
- 1935/36 Calne & District League Champions
- Calne & District League Cup Runners-up
- 1938/39 Brotherhood Cup Winners
- 1953/54 Vale of White Horse Cup Winners
- 1957/58 Chippenham & District League Division 2 Champions
- 1958/59 Wiltshire League Division 1 Champions
- 1978/79 Wiltshire County League Division 2 Runners-up
- Wiltshire County League Subsidiary Cup Winners
- 1982/83 Wiltshire County League Division 4 Runners-up
- 1983/84 Wiltshire County League Ghia Senior Cup Winners
- 1984/85 Wiltshire County League Division 2 Champions
- Wiltshire County League Ghia Junior Cup Runners-up
- 1987/88 Wiltshire County League Division 1 Champions
- Wiltshire Senior Cup Runners-up
- 1988/89 Wiltshire County League Ghia Junior Cup Runners-up
- 1989/90 Hellenic League Division 1 Cup Winners
- 1993/94 Hellenic League Division 1 Cup Winners
- 1994/95 Hellenic League Division 1 Cup Runners-up
- 1998/99 Wiltshire Senior Cup Winners
- 2000/01 Wiltshire Senior Cup Winners
- Hellenic League Reserves Division 2 West Champions
- 2004/05 Wiltshire Youth Cup Runners-up
- 2009/10 Hellenic League Division 1 West Runners-up
- 2010/11 Wiltshire County FA Floodlit League Champions
- Wiltshire Youth Cup Runners-up
- 2012/13 Hellenic League Division 1 West Runners-up
- Wiltshire County League Junior Cup Runners-up



From The Dugout

Good afternoon and a warm welcome to the management team and players from Bracknell Town to the New Gerard Buxton Ground for this UHlsport Hellenic League Premier Division fixture.

After our great win at Thatcham the previous week it was something of a comedown to lose at home last week to Milton United. We created plenty of chances during both halves but just did not put them away and this was three points lost against a side we should really be beating but if you don't take your chances.... After four wins on the bounce before that we now need to dust ourselves down and look to get back to winning ways again quickly. Today we meet a Bracknell side for the third time this season with honours even at the moment. They beat us 2-0 at the start of the season in the FA Cup and we then got revenge in the Bluefin Insurance Challenge Cup, winning by the same score.

Bracknell are now under new management with the experienced Mark Tallentire taking over the management reigns. I expect that Bracknell will start to climb the table under his stewardship. I was interested to see on FA.com that Bracknell have already used 59 different players this season, which perhaps explains why they have struggled so far. This is nearly twice the number we have used (30) and is not an indication of a settled side.

It was pleasing to note that we have been drawn at home in the Wiltshire Senior County Cup, with Melksham our visitors. They won the Western League last season and will be tough opponents but with Salisbury, Highworth Town, Corsham Town and Bemerton Heath Harlequins still in the competition, whoever we drew was going to be tough. Hopefully we can win this game and also the Floodlit game against Lydney to go into the New Year fighting on four fronts.

The fixtures to come thick and fast and we have 6 games to play in December, weather permitting. This is always a tough time of the year with players away over the festive period but we feel we have a big enough squad to be able to cope this season. With a number of Under 18's also making the step up, we should be competitive in all our December fixtures even if we have one or two missing.

Despite the result on Saturday all of the lads had a great evening in the Clubhouse Saturday night. I was particularly pleased to see so many of the players present, not just from the First Team but also the Reserves, the Ladies Team and the Under 18's. For me this is a good indication that the team spirit at the moment is really good and hopefully we can have a similar event over the Christmas/New Year period.

Enjoy the game today and see you in the bar afterwards.

Paul



Opponents - History

Bracknell Town • Club History

Bracknell Town Football Club was formed in 1896 as Old Bracknell Wanderers and changed its name to Bracknell F.C. in 1949.

The club played in the local leagues until joining the Great Western League in 1959. After four seasons in this league, and renaming the club Bracknell Town in 1962, the club was elected to the Surrey Senior League, which they won in 1969-70. The club also won the league cup in 1968-69 and 1969-70.

After this success the club entered the Spartan League (later renamed the London Spartan League) and finished runners-up on goal average in 1975-76, in which they also reached the Fifth Round of the FA Vase.

After winning the league in 198-83, they were promoted in 1984 to the Isthmian League Division Two South. They were promoted to Division One as runners-up in 1985-86, finishing third in their highest ever league placing. However, in 1988-89, Bracknell Town was relegated and, following a re-organisation of the Isthmian League, were placed in Division Three in 1991-92.

They returned to the Isthmian League Division Two after winning the league in 1993-94, but after five seasons were relegated back down to Division Three. After another league re-organisation in 2002-03, the club was moved into the Isthmian League Division One South, but moved to the Southern Football League Division One West after two seasons. Bracknell were reprieved from relegation in 2008-09 but were relegated the following season to the Hellenic Football League Premier Division, and subsequently to Division 1 East at the end of the 2011/12 season.

Having won promotion back up at the first attempt, 2013/14 saw the Robins finish thirteenth in the Hellenic Football League Premier Division whilst they were runners up in the 'Bluefin Sports' Hellenic Supplementary Cup.

A managerial change during 2014/15 season saw Keith Pennicott-Bowen take the helm and he steered his side to ninth place in the Hellenic League Premier Division, their highest ever placing as they also broke their record for points and victories in an Hellenic season.



Hellenic League Sundry Stats

Uhsport Hellenic League

Top Goalscorers (all games) as at 23rd November 2015

| | | | |
|-----|--------------------|-----------------------|----|
| 1 | Stephen Robertson | Royal Wootton Bassett | 20 |
| 2 | Christopher Hurst | Flackwell Heath | 17 |
| 2 | Shane Cooper-Clark | Bracknell Town | 17 |
| 2 | Anaclet Odhiambo | Kidlington | 17 |
| 2 | T.J. Bohane | Highworth Town | 17 |
| 6 | Daniel Burnell | Flackwell Heath | 15 |
| 7 | Richard Kear | Lydney Town | 13 |
| 8 | Josh Baines | Thatcham Town | 12 |
| 8 | Josh Helmore | Thatcham Town | 12 |
| 8 | Lewis Coyle | Kidlington | 12 |
| 8 | Joesph Grant | Ascot United | 12 |
| 8 | Jamie West | Ascot United | 12 |
| 42 | Stephen Olphert | Royal Wootton Bassett | 6 |
| 42 | Harvey Scholes | Royal Wootton Bassett | 6 |
| 91 | Sam Packer | Royal Wootton Bassett | 3 |
| 91 | Dan Bailey | Royal Wootton Bassett | 3 |
| 91 | Steve Yeardeley | Royal Wootton Bassett | 3 |
| 124 | Tyler Sheppard | Royal Wootton Bassett | 2 |
| 168 | Ryan Thomas | Royal Wootton Bassett | 1 |
| 168 | Nathan Hawkins | Royal Wootton Bassett | 1 |
| 168 | Joe Hiscock | Royal Wootton Bassett | 1 |



| Recent Results | Upcoming Fixtures | Postponed/Cancelled | Teams |
|---|-------------------|---------------------|--|
| ABINGDON UNITED Last: Prem Wokingham &.. 5 - 0 Abingdon Un.. Next: HCup Thatcha.. (H) 24/11/15 19:45 | LWLLWL | | ARDLEY UNITED Last: CCup Ardley Unit.. 3 - 0 Kidlington .. Next: Prem Ascot U.. (A) 28/11/15 15:00 |
| ASCOT UNITED Last: Hailsham Town 1 - 4 Ascot United Next: Prem Ardley .. (H) 28/11/15 15:00 | DLWDDW | | BINFIELD Last: HCup Moreton Rangers 0 - 3 Binfield Next: Prem Lydney .. (A) 28/11/15 15:00 |
| BRACKLEY TOWN SAINTS Last: Prem Brackley To.. 7 - 2 Brimscombe .. Next: Prem Abingdo.. (H) 02/12/15 19:45 Suspensions: March | LLLLLW | | BRACKNELL TOWN Last: Prem Ardley Unit.. 6 - 4 Bracknell T.. Next: Prem Royal W. (A) 28/11/15 15:00 Suspensions: O Connor |
| BRIMSCOMBE & THRUPP Last: Brimscombe & .. 3 - 2 Torpoint Athl.. Next: Prem Longlev.. (H) 28/11/15 15:00 | WDWWWL | | FLACKWELL HEATH Last: Bowers & Pits.. 3 - 2 Flackwell Hea.. Next: Prem Oxford .. (H) 28/11/15 15:00 Suspensions: Woodward |
| HIGHMOOR-IBIS Last: Prem Highmoor-Ib.. 0 - 3 Tuffley Rov.. Next: Prem Thame U.. (H) 28/11/15 15:00 Suspensions: Edwards, Slatcher, Slatch.. | WDWWWL | | HIGHWORTH TOWN Last: Highworth Town 2 - 1 Odd Down Next: Prem Abingdo.. (H) 28/11/15 15:00 |
| KIDLINGTON Last: Kidlington 7 - 0 Deal Town Next: CCup Woodcot.. (H) 28/11/15 15:00 | WWLWWW | | LONGLEVENS AFC Last: Prem Longlevens .. 3 - 2 Wokingham &.. Next: Prem Brimsco.. (A) 28/11/15 15:00 |
| LYDNEY TOWN Last: Prem Lydney Town 0 - 3 Ascot United Next: CCup Bishops.. (A) 25/11/15 19:30 Suspensions: Rutter | DDLLWL | | MILTON UNITED Last: Prem Royal Woott.. 0 - 2 Milton Unit.. Next: Prem Wokingh.. (H) 28/11/15 15:00 |
| OXFORD CITY NOMADS Last: CCup Oxford City.. 6 - 1 Eynsham Ass.. Next: Prem Flackwe.. (A) 28/11/15 15:00 | WWLLLL | | ROYAL WOOTTON BASSETT Last: Prem Royal Woott.. 0 - 2 Milton Unit.. Next: Prem Brackne.. (H) 28/11/15 15:00 |
| THAME UNITED Last: Pagham 0 - 3 Thame United Next: CCup Hook No.. (H) 24/11/15 19:45 Suspensions: Tapping | DWVWLW | | THATCHAM TOWN Last: Prem Thatcham To.. 1 - 2 Royal Woott.. Next: HCup Abingdo.. (A) 24/11/15 19:45 |
| TUFFLEY ROVERS Last: CCup Tuffley Rove.. A - W Bristol Manoo.. Next: HCup Milton .. (A) 05/12/15 15:00 | DWLDLW | | WOKINGHAM & EMMBROOK Last: Prem Wokingham &.. 5 - 0 Abingdon Un.. Next: Prem Milton .. (A) 28/11/15 15:00 Suspensions: Rowland |



Defunct Opponents

A look back at former opponents who are no longer competing. After Avebury, Sanford, Walcot Ath, Wollen Sports, Meadowcroft and Ferndale Athletic amongst others today's featured team is former Bradford-on-Avon side...

Spencer Moulton FC

The first known games between Wootton Bassett Town FC and Spencer Moulton came in the Wiltshire Senior League in Season 1935-36 when, having joined the Wiltshire League, Wootton Bassett met the reserve side of the Bradford-on-Avon club. Wootton Bassett did the double winning 4-1 at home thanks to goals from Arthur Embling (2), Ernie Fry and Bull. The game at Bradford-on-Avon was a closer affair with goals from Eric Pearce (2) and Fred Perry.

With Wootton Bassett Town being promoted to the top division of the Wiltshire League it was the First Team of Spencer Moulton that Wootton Bassett were to meet the following season. Spencer Moulton won comprehensively at Bradford-on-Avon, 6-0 the final score. The return in Wootton Bassett saw Spencer Moulton win by the odd goal in seven, Embling, Brown and Beazley with the Bassett goals. Spencer Moulton finished 5th with Bassett back in 10th place.

In Season 1937-38 Spencer Moulton won 5-0 at home but Bassett extracted revenge at Rylands Way winning 3-2 thanks to goals from Arthur Embling (2) and Bartlett. The following season saw Spencer Moulton do the league double over Bassett winning 3-0 at Rylands Way and 7-1 on their own ground. These were to be the last encounters between the two sides for seven years with the outbreak of World War II.

When the Wiltshire League reconvened in 1945-46 the two sides were to struggle, Wootton Bassett finishing bottom of the league and Spencer Moulton just two places above them in 12th place. Their record in the rest of the 1940's and 1950's was:

1946-47 – 3rd out of 16
 1947-48 – 13th out of 16
 1948-49 – 12th out of 15
 1949-50 – 10th out of 15
 1950-51 – 5th out of 16
 1951-52 – 8th out of 16
 1952-53 – 12th out of 16

1953-54 – 9th out of 16
 1954-55 – 14th out of 16
 1955-56 – 12th out of 16

The formation of the new Wiltshire League and the creation of a Premier Division saw the two sides in different divisions, Spencer Moulton in the Premier League and Wootton Bassett in Division 1. With Wootton Bassett winning Division 1 in 1958-59 the two clubs once again met as the 1960's started.

On 19th September 1959 first half goals from Teetgen, Campbell and Nash helped Wootton Bassett win 5-1. The return game on 9th January 1960 saw another 5 goals for Bassett including a Peter Teetgen hat-trick as Bassett won 5-2. This was a bad season for Spencer Moulton who picked up just one point from 28 games and were relegated.

Spencer Moulton regained their Premier Division place at the end of Season 1965-66. In Season 1966-67 it was the Bradford-on-Avon side who had the better of things winning 8-2 at home and 5-3 at Rylands Way, finishing in 6th place whilst Wootton Bassett were just one off the bottom in 16th spot.

The following season it was honours even, Wootton Bassett Town winning away 2-1 but losing 3-0 at Rylands Way. Despite this defeat Bassett finished 3 places above Spencer Moulton in 8th place.

Season 1968-69 saw the formation of the Wiltshire Combination with both clubs as participants. It was to be Wootton Bassett Town who had the better of things. In October two goals from Brian Ewen and one from Tom Gardiner gave Wootton Bassett a 3-2 away win at Bradford-on-Avon. In the return at Rylands in December, goals from Colin Taylor and Dave Challis ensured a point a piece.

Season 1969-70 was to see the last known encounters between the two clubs as Spencer Moulton, finishing second from bottom dropped out of the league at the end of the season. On 4th October 1969 goals from Dave Challis, Dave Clark and Roy Blackburn gave Wootton Bassett Town a 3-1 win. The final game between the two clubs took place on the 15th May 1970, the final fixture of the season for Wootton Bassett. Goals from Tommy Gardiner (3), Graham Reid, Roy Blackburn, Dave

Clark and Stuart Ward secured a 7-0 win for Wootton Bassett Town.

Spencer Moulton took part in the FA Cup for seven seasons just after the Second World War. In 1946-47 they lost in the Extra Preliminary Round 2-4 at home against Melksham Town. In 1948-49 they secured their best ever result winning 10-3 at home against West End Rovers. A narrow 2-1 defeat at Westbury in the Preliminary Round ended their interest in the FA Cup that season. The following season they went out in the Extra Preliminary Round losing 3-1 at home to Devizes Town.

Season 1950-51 saw Spencer Moulton draw Wootton Bassett Town in the Extra Preliminary Round. The Wiltshire Times dated Saturday 9th September 1950 carried the following report on the game which saw Wootton Bassett win 2-1:

"Spencer Moulton went to Wootton Bassett for their FA Cup game. Only one minute from the kick-off Thompson, the home team's inside-left, had to leave the field with an injury. The visitors attacked and Young had saved from Sherman. The home team rallied, and Newbury was called upon to save twice from Brown. Brown scored for Wootton Bassett after 30 minutes, but the ball quickly changed ends, and Young pulled off a splendid save from Dawson. The equalising goal came with a long dropping shot from Bolwell which completely beat the home goalkeeper. The second half saw a win for Wootton Bassett by 2-1, the deciding goal being scored by Farlie."

The two following seasons saw FA Cup interest ended by Chippenham Town. Spencer Moulton's second win in the competition came in Season 1953-54 when they won 6-2 at home against Westbury United in the Preliminary Round. Interest in the competition was ended by Welton Rovers who won 5-3 in the First Qualifying Round tie. Spencer Moulton were not to enter the competition again until 1969-70, their final season in the Wiltshire Combination, when they were hammered by Weston Super Mare 11-2 in what was also to be their final appearance in the FA Cup.

Bradford Town of the Western League now play on the old Spencer Moulton ground having been formed in 1992 when Senior football was brought back to Bradford-on-Avon.

Opponents Pen Pics

Bracknell Town FC



Garry Aulsberry

Goal Keeper

Tremendous goalkeeper who has it all. Was at Wokingham for a number of years, vastly experienced at this level.



Adam Kennedy

Defence

Assured defender who can play left-back or central defence. Reads the game well and always in the right place.



Grant Goodband

Defence

A solid defender who loves to tackle and has a committed approach. Can play right-back or centre back.



Michael Watson

Defence

Quick and attacking right back who came through our youth system. 'Mikey' is Mr. Consistency, solid every week.



Andre Kelly

Defence

Very composed and cultured central defender. Has great positional sense and always leads by example on the pitch.



Jake White

Defence

Captain. A very quick player primarily used in defence but can play upfront and wide, a great all-rounder.



Jordan Rowland

Defence

Former winger now playing left back. An attack minded player who strikes the ball extremely well, provides plenty of assists



George Lock

Defence

Small in stature but extremely strong and brave in the tackle. A young full-back who gives his all.



Liam Alleyne

Defence

Re-joined near the end of last season. Can play a multitude of positions but primarily used in defence. Extremely strong.



Elliott Garrington

Defence

Attack minded full-back who used to play as a winger. Good tackler and strikes the ball very well.



Dan Money

Midfield

Vice-Captain. Very good work-rate and is the side's heartbeat in midfield. Good tackler who covers lots of ground.



Tom Nugent

Midfield

Strong as an ox and can play in midfield or defence. Good luck dispossessing him. Good header of the ball.



Kennie Chamberlain

Midfield

Attacking midfielder who likes to work spaces. Tidy on the ball and great at retaining possession to keep moves flowing.



Martin Bradshaw

Midfield

Quiet and unassuming but a very effective player for us. A direct winger who is both quick and skilful.



Dan Ridge

Midfield

Youth team captain last season and strong midfielder. Good in the air, good in the tackle and a good passer.



James King

Midfield

Good dribbler of the ball and very skilful. Can use both feet and will cause defences problems. Great close control.



Sean Hanley

Forward

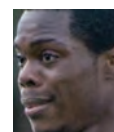
Lightening quick striker who can also play out wide. Strikes the ball very well and loves taking players on.



Ebenezer Opoku-Ware

Forward

Has so many skills and tricks up his sleeve. Exploits spaces on the pitch where he can launch attacks.



Mike Lokwa

Forward

New signing who played for AFC Wimbledon U21 side. Big and strong player who can play centrally or out wide.



Shane Cooper-Clark

Forward



The main man last season with 36 goals. A true striker who scores every type of goal. Great conversion rate.

Today's Opponents

Bracknell Town FC

Formed: 1896
Nickname: The Robins
Chairman: Chris Day
Secretary: Dave Bell

Ground: Larges Lane, Bracknell, RG12 9AN
Tel: (01344) 412305
Manager: Mark Tallentire
Capacity: 2,500
Seats: 150 Covered 500
Colours: Red & White Shirts, Red Shorts & Socks
Ground Directions: Leave M4 at J10, take A329M signposted Wokingham & Bracknell. Follow road for 5 miles, over roundabout, pass Southern industrial estate (Waitrose etc.) on right to a 2nd roundabout with traffic lights; take 2nd exit and follow signposts for M3. At next roundabout take 1st exit. At next roundabout take 3rd exit, Church Road dual carriageway. This brings you to another roundabout with Bracknell & Wokingham college on right and Old Manor PH on left, take 5th exit for Ascot - A329. Go down hill on dual carriageway, London Road to next roundabout take 4th exit back up the dual carriageway, London Road, Larges Lane last left turn before reaching roundabout again. Ground 200 yards on right.

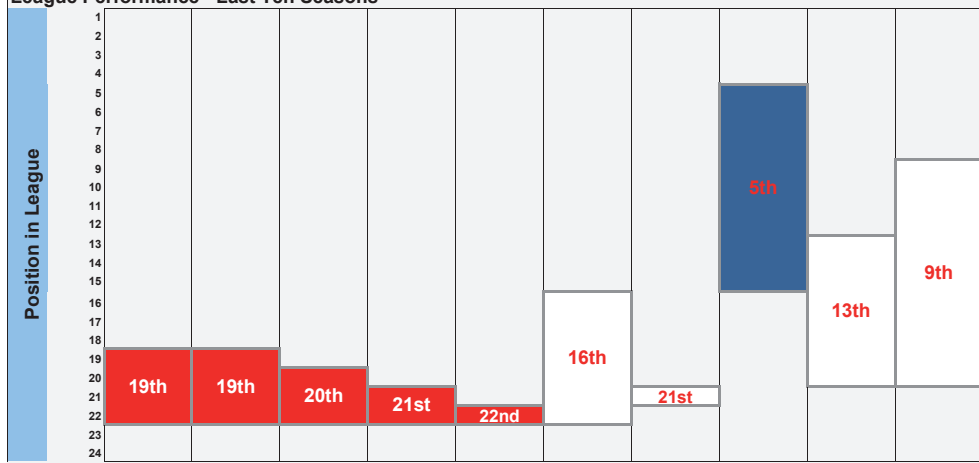



Southern League S.West

Hellenic Premier

Hellenic Div One East

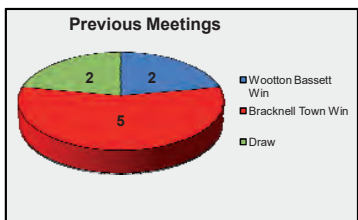
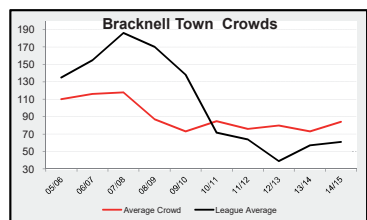
League Performance - Last Ten Seasons



| Season | 05/06 | 06/07 | 07/08 | 08/09 | 09/10 | 10/11 | 11/12 | 12/13 | 13/14 | 14/15 |
|----------------------|--------------|----------------|--------------|--------------|--------------|---------------|--------------|-------------------|--------------|-------------------|
| Top Scorer | Not known | M. Anderson 23 | Not known | Not known | Not known | H. Swaybey 13 | B. Knight 18 | S.Cooper-Clark 16 | S.Barrett 20 | S.Cooper-Clark 40 |
| Average Crowd | 110 | 116 | 118 | 87 | 73 | 85 | 76 | 80 | 73 | 84 |
| Total Crowd | 2,310 | 2,436 | 2,478 | 1,827 | 1,541 | 1,787 | 1,527 | 1,040 | 1,378 | 1,596 |
| F.A. Cup | Prelim Rnd | Prelim Rnd | Prelim Rnd | 1st Qual Rnd | Prelim Rnd | Prelim Rnd | Extra Prelim | 1st Qual Rnd | Prelim Rnd | Extra Prelim |
| F.A. Trophy | 1st Qual Rnd | 1st Qual Rnd | 1st Qual Rnd | 1st Qual Rnd | 1st Qual Rnd | n/a | n/a | n/a | n/a | n/a |
| F.A. Vase | n/a | n/a | n/a | n/a | n/a | 2nd Round | 2nd Qual Rnd | 2nd Qual Rnd | 2nd Qual Rnd | 2nd Qual Rnd |

| Current Form (Last Six Games) | | |
|-------------------------------|-----------------------------|---------|
| Date | Opponent | Result |
| 14-Nov-15 | v Ardley United (A) | L 4 - 6 |
| 10-Nov-15 | v Royal Wootton Bassett (H) | L 0 - 2 |
| 3-Nov-15 | v Holmer Green (A) | L 0 - 4 |
| 31-Oct-15 | v Longlevens (A) | L 1 - 3 |
| 27-Oct-15 | v Abingdon United (A) | W 3 - 1 |
| 24-Oct-15 | v Highmoor bis (H) | L 1 - 2 |

| v Wootton Bassett Town (Last Six Games) | | |
|---|---|---------|
| Date | Fixture | Result |
| 10-Nov-15 | Bracknell Town 0 Wootton Bassett Town 2 | L 0 - 2 |
| 15-Aug-15 | Wootton Bassett Town 0 Bracknell Town 2 | L 0 - 2 |
| 18-Oct-14 | Bracknell Town 2 Wootton Bassett Town 2 | D 2 - 2 |
| 20-Aug-14 | Wootton Bassett Town 0 Bracknell Town 5 | L 0 - 5 |
| 9-Apr-14 | Wootton Bassett Town 0 Bracknell Town 1 | L 0 - 1 |
| 10-Aug-13 | Bracknell Town 4 Wootton Bassett Town 1 | L 1 - 4 |



Wilts U18 Floodlit League



WOOTTON BASSETT TOWN FOOTBALL CLUB SEASON 2015-16 U18 TEAM FIXTURES - WILTSHIRE COUNTY FLOODLIT LEAGUE

| Date | Opponents | H/A | Comp | Result | Scorers |
|-----------------|-----------------|-----|--------|---------|----------------------------------|
| Thurs 03-Sep-15 | Calne Town | H | League | W 5 - 2 | Collins 2, Covey, Harris, OG |
| Thurs 10-Sep-15 | Shrivenham | A | League | W 3 - 0 | Covey 3 |
| Thurs 01-Oct-15 | Chippenham Town | H | League | W 6 - 4 | Collins 2, Covey 2, Thompson, OG |
| Thurs 08-Oct-15 | New College | A | League | W 3 - 0 | Murphy 2, Gregory |
| Thurs 19-Nov-15 | New College | H | League | W 5 - 0 | Collins 2, Covey 2, Thompson |
| Wed 25-Nov-15 | Chippenham Town | A | League | L 1 - 2 | Vivash |
| Wed 02-Dec-15 | Calne Town | A | League | | |
| Thurs 10-Dec-15 | Shrivenham | H | League | | |

AFC Corsham have withdrawn from the league

Wiltshire U18 Floodlit League - North Division

| | P | W | D | L | F | A | PTS |
|--|---|---|---|---|----|----|-----|
| 1 Royal Wootton Bassett Town FC | 6 | 5 | 0 | 1 | 23 | 8 | 15 |
| 2 Shrivenham FC | 7 | 4 | 0 | 3 | 15 | 13 | 12 |
| 3 New College, Swindon FC | 8 | 4 | 0 | 4 | 21 | 21 | 12 |
| 4 Chippenham Town FC | 8 | 4 | 0 | 4 | 17 | 20 | 12 |
| 5 Calne Town FC | 7 | 1 | 0 | 6 | 8 | 22 | 3 |

AFC Corsham withdrew from league

Wiltshire U18 Floodlit League - South Division

| | P | W | D | L | F | A | PTS |
|--------------------------------|---|---|---|---|----|----|-----|
| 1 Melksham Town FC | 5 | 4 | 0 | 1 | 16 | 5 | 12 |
| 2 Laverstock and Salisbury FC | 3 | 3 | 0 | 0 | 9 | 1 | 9 |
| 3 Bemerton Heath Harlequins FC | 4 | 2 | 1 | 1 | 5 | 4 | 7 |
| 4 Bradford Town Youth FC | 6 | 2 | 0 | 4 | 12 | 15 | 6 |
| 5 Amesbury Town FC | 4 | 1 | 1 | 2 | 7 | 10 | 4 |
| 6 Pewsey Vale FC | 6 | 1 | 0 | 5 | 8 | 22 | 3 |

Programme Sales

Missing any Wootton Bassett Town programmes? We have a number of spare copies of both current season and past season programmes going back to Season 2004-5.

All enquiries as to which programmes are available should be addressed to Mark Smedley by email at the following address: mark.smedley@wbtfc.co.uk.

All programme back issues are priced at £1 plus £1.30 postage (postage for multiple orders will be provided on request).



Todays Opponents - This Season

Results Season 2015-16

| Date | Result | League/Cup | Opponent | Score | Opponent | Scorers | Att |
|-----------|--------|--------------|--------------------|-------|------------------|-----------------------------|-----|
| 8-Aug-15 | L | Premier | Bracknell Town | 1 | Highworth Town | 3 Lokwa | 82 |
| 11-Aug-15 | L | Premier | Flackwell Heath | 3 | Bracknell Town | 2 Cooper-Clark, Hanley | 56 |
| 15-Aug-15 | W | FA Cup | Royal W.Bassett T | 0 | Bracknell Town | 2 Cooper-Clark 2 | 121 |
| 18-Aug-15 | L | Premier | Thatcham Town | 6 | Bracknell Town | 2 Cooper-Clark 2 | 92 |
| 22-Aug-15 | L | Premier | Bracknell Town | 0 | Ardley United | 1 | 61 |
| 25-Aug-15 | L | Premier | Bracknell Town | 0 | Wokingham & E | 3 | 119 |
| 29-Aug-15 | D | FA Cup | Brimscombe & Th | 2 | Bracknell Town | 2 Cooper-Clark, Opuku-Ware | 79 |
| 1-Sep-15 | W | FA Cup | Bracknell Town | 1 | Brimscombe & Thr | 0 Cooper-Clark | 141 |
| 5-Sep-15 | W | FA Vase | Bracknell Town | 1 | Hook Norton | 0 Cooper-Clark | 59 |
| 8-Sep-15 | W | Floodlit Cup | Bracknell Town | 4 | Rayners Lane | 0 Bradshaw 3, Lokwa | 40 |
| 12-Sep-15 | L | FA Cup | Shortwood Utd | 4 | Bracknell Town | 3 Bradshaw 2, Cooper-Clark | 85 |
| 15-Sep-15 | D | Premier | Milton United | 3 | Bracknell Town | 3 Cooper-Clark 3 | 47 |
| 19-Sep-15 | W | Premier | Bracknell Town | 2 | Brackley Town | 1 Hanley, Ridge | 66 |
| 22-Sep-15 | D | Premier | Bracknell Town | 1 | Kidlington | 1 Chamberlain | 60 |
| 26-Sep-15 | W | Bluefin Cup | Bracknell Town | 1 | Chinnor | 0 Borges | 50 |
| 30-Sep-15 | L | Premier | Oxford City Nomads | 2 | Bracknell Town | 0 | 62 |
| 3-Oct-15 | D | FA Vase | Alton Town | 1 | Bracknell Town | 1 Kelly | |
| 6-Oct-15 | L | FA Vase | Bracknell Town | 0 | Alton Town | 3 | 81 |
| 10-Oct-15 | L | Premier | Brimscombe & Th | 2 | Bracknell Town | 1 Watson | 64 |
| 13-Oct-15 | L | Floodlit Cup | Bracknell Town | 2 | Highmoor Ibis | 3 Cooper-Clark, Kaiser | 60 |
| 17-Oct-15 | D | Premier | Bracknell Town | 1 | Lydney Town | 1 Cooper-Clark | 61 |
| 19-Oct-15 | D | Premier | Binfield | 2 | Bracknell Town | 2 Money, White | 153 |
| 24-Oct-15 | L | Premier | Bracknell Town | 1 | Highmoor Ibis | 2 White | 81 |
| 27-Oct-15 | W | Premier | Abingdon United | 1 | Bracknell Town | 3 Cooper-Clark 2, White | 64 |
| 31-Oct-15 | L | Premier | Longlevens | 3 | Bracknell Town | 1 Cooper-Clark | 42 |
| 3-Nov-15 | L | County Cup | Holmer Green | 4 | Bracknell Town | 0 | |
| 10-Nov-15 | L | Bluefin Cup | Bracknell Town | 0 | Royal W.Bassett | 2 | 82 |
| 14-Nov-15 | L | Premier | Ardley United | 6 | Bracknell Town | 4 Cornell 2, Dyer, Oliphant | 52 |

| Goalscorers | Goals | Strike-Rate |
|---------------------|-------|-------------|
| Shane Cooper-Clark | 17 | 70.8% |
| Martin Bradshaw | 5 | 33.3% |
| Adam Cornell | 2 | 200.0% |
| Mike Lokwa | 2 | 22.2% |
| Daniel Money | 2 | 8.3% |
| Jake White | 2 | 3.6% |
| Pascal Kaiser | 1 | 100.0% |
| Davidson Borges | 1 | 50.0% |
| Johnie Dyer | 1 | 50.0% |
| Michael Watson | 1 | 14.3% |
| Kennie Chamberlain | 1 | 10.0% |
| Sean Hanley | 1 | 8.3% |
| Ebenezer Opoku-Ware | 1 | 8.3% |
| Andre Kelly | 1 | 6.3% |
| Luke Hanley | 1 | 5.0% |
| Danny Oliphant | 1 | 4.2% |
| Dan Ridge | 1 | 2.1% |

Pictured below



Previous Meetings

Clinical Cooper-Clark accounts for toothless Bassett

New Gerard Buxton Sports Ground, 15th August 2015

What a difference the presence of a prolific centre forward can make.

In an FA Cup Extra Preliminary Round tie that never really sparked into life, Bracknell Town progressed at the expense of Royal Wootton Bassett Town courtesy of a brace from Robins' sharpshooter Shane Cooper-Clark. A 36 goal man last season, the Bracknell forward demonstrated his clinical ways to decide the outcome of a tie between two teams who were relatively evenly matched.

Cooper-Clark decisively dispatched the game's opening opportunity midway through the first period before drawing a mistake from home 'keeper Curtis Meare with a long range strike to double Bracknell's advantage shortly after the interval. Bassett, on the other hand, were let to bemoan the absence of their own chief goal-getters, Steve Robertson and the suspended Nathan Gambling. Without them, Paul Braithwaite's team offered little offensively and subsequently never really looked like scoring. While both will soon return and hopefully pick up from where they left off last year, a more general fix required is to start playing with more urgency before it's too late. Not until the game's final twenty minutes did Bassett start to chase the game, with the belated introduction of Ryan Thomas sparking some much needed life into an otherwise flat performance. Even then though, late pressure failed to translate into the required breakthrough that would have posed the threat of a replay at Larges Lane. Instead, Bassett have to live with an early exit from a competition they have done so well in over the last few seasons.

It was a defensive mistake that created the chance for Cooper-Clark's opener. Too slow to react to a loose ball just outside the area, Bassett allowed tricky winger Ebenezer Opoku-Ware to seize possession unchallenged. He skipped past George Drewitt before feeding Cooper-Clark with a slide rule pass. Requiring a touch to get the ball out of his feet, the forward then arrowed a low strike, with the help of a slight deflection, into the bottom left corner. Moments later, Cooper-Clark beat the offside trap but dragged wide, his usual predatory instincts fortunately failing him. Only once did the hosts come close as the uninspiring first half slowly meandered its way towards its conclusion. A Sam Packer switch stretched the Bracknell defence, and Dan Comer's cross proved just out of reach of an unmarked Kalum Youngsam in the middle. The danger wasn't fully averted as Dan Bailey did well to keep the ball in play. Tyler Sheppard then cut back for Packer, whose effort with the outside of his right boot skewed narrowly over. Too often Bassett were unwilling to pull the trigger when in advanced positions, choosing instead to shift the ball around more to try and work a better angle through the visiting defence. That tendency did not afflict Bracknell, however.

Three minutes after the restart a swift counter eventually saw the ball worked to Cooper-Clark in the left channel. With a sight of goal, he fired low from thirty yards. Meare, perhaps not expecting a shot from that range, was caught unprepared and, crossed-up, his attempted block near the left post served only to send the ball squirming over the line. It was the type of mistake that all 'keepers at some point make, and Meare redeemed himself later on getting down low to fist away Sean Hanley's daisy-cutter before quickly reacting to smother at the feet of Ware. At the other end, Gary Aulsberry was finally brought into action, dramatically parrying away a Harvey Scholes blast before pulling off an equally acrobatic save to turn a Thomas curler around the post. His day, however, was otherwise a rather relaxed one. Late on, Bassett's frustrating day took a further turn for the worse as Drewitt, making his first appearance of the season after completing a suspension, was dismissed for a second yellow following a late challenge. He'll therefore be absent for another game in a couple of weeks' time. On this day though, it was the lack of a goal threat - and Bracknell's possession of one - that left Bassett cursing an early cup exit.

Man of the Match: Dan Comer – went about his business at right back efficiently once more, continuing his positive start to the campaign.

Royal Wootton Bassett Town F.C. Reserve Team Season 2015-16



Back: Ray Ellis (Assistant), Danny Groom (Manager), Luigi Hernandez, Tom Blackford, Richard Clarke, Kyle Brooks, Dan Murphy, Scott Walduck, Brendan Shaw, Dave Terry (Manager).
Front: Lewis Tidy, Scott Large, Jack Ellis, Steve Groom, Dave Groom, Ben Brown, Carl Shepherd, Jake Covey, Jake Kitchin

Royal Wootton Bassett Town F.C. First Team Season 2015-16



Back: Chris Green (Asst. Man), Marcus Lewis (GK Coach), Nathan Hawkins, Steve Yeardley, Sam Packer, Dan Comer, Dale Richards, Curtis Meare, Dan Bailey, George Drewitt, Stephen Olphert, Adam Cororan, Paul Braithwaite (Manager), Kara Gregory
Front: Oliver Smith (Mascot), Steve Robertson, Tyler Sheppard, Ryan Thomas, Harvey Scholes, Kalum Youngsam, Matt Cheetham

RWBTFC History On One Page

Royal Wootton Bassett Town FC • Club History



Wootton Bassett Town formed in 1882 and are one of the oldest Clubs in Wiltshire. Bassett's early success came in the Wiltshire Senior Cup, making the final in both 1902-3 and 1903-4, losing to Warminster 3-1 in a replay before going down 3-0 to Swindon Town the following season. Bassett folded for a period pre World War 1 before re-forming in the Calne & District League. After finishing runners-up in 1930-31 they went one better the following year winning the championship. A short unsuccessful spell in the Swindon & District League saw the team return to the Calne League where they were champions again in 1934-35.

Having won the Calne League for the second time Bassett moved up into Wiltshire League Division 2. Promotion was achieved in the first season and the team remained in the top division until the start of World War II. After the war Bassett recommenced in the County Senior League but struggled. In 1956-57 a reorganisation of football in Wiltshire saw the creation of a Premier Division and Bassett found themselves in the second tier. Season 1958-59 saw the first title secured when Bassett finished top of Division 1. Back in the top tier the highest place finish was 8th in Season 1967-68. Then, following another reorganisation, Bassett found themselves in the Wiltshire Combination where they were to remain until 1976-77 when the current Wiltshire County Football League was formed. The second season in the new league saw Bassett relegated but they were to bounce straight back in 1978-79 when they finished runners-up. Unfortunately momentum could not be maintained and they were immediately relegated to Division 2 where they remained for 5 seasons. A second league title was secured in 1984-85 when Bassett were promoted back to Division 1. This time the team were able to hold their own and after finishing 6th and 4th they then achieved their greatest success in 1987-88 when they won the Division 1 title, elevating the Club into the Hellenic League, where they have remained since.

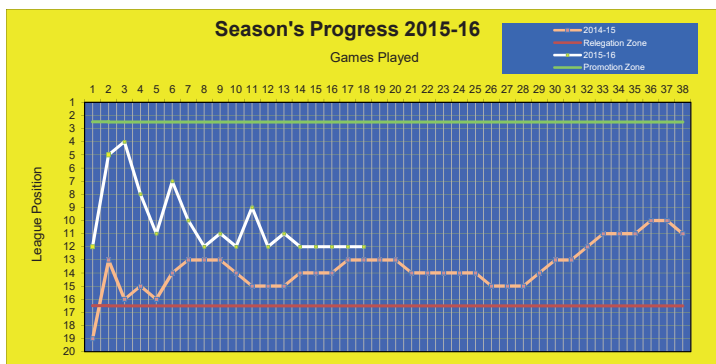
Throughout their first eleven seasons Bassett kept a steady mid table position. In 1999-2000 they finished 3rd in Division One West and gained promotion to the Hellenic top flight. First season in the Premier resulted in a respectable twelfth position and a County Cup triumph. The next season they made the first round of the FA Vase but just avoided relegation. The next two seasons saw Bassett finish mid table but the following season they were relegated, this after making their first venture into the FA Cup since 1950-51. Bassett missed immediate promotion back to the Premier by one point in 2005-06 and went close again in 2008-09, finishing fourth. Meanwhile Bassett became the first club in Wiltshire to be awarded Charter Community Club status by the FA. Promotion back to the Premier Division was secured at the end of 2009-10 as Bassett finished level on points with champions Slimbridge.

Bassett finished in a credible 15th place in their first season back in the Premier. However, they harshly found themselves demoted back to Division One on a ground grading technicality. They did well to finish in 5th place the following season after such heartbreak. In 2012-13 Bassett were never out the top 3 as they marched towards promotion, finishing 2nd. In addition they reached the FA Cup 2nd Qualifying Round for the first time. At the end of the season manager Dave Turner decided to move on after 5 years in charge. The Club were devastated when shortly after the fixture with his new club Shrivensham Dave tragically passed away.

With plans for the club's and Sports Association's new facility finally moving ahead, the first team began a two year ground share with Cirencester Town in 2013-14, a year in which Bassett finished a comfortable 14th in the Hellenic Premier Division. That performance was bettered in 2014-15 under new manager Paul Braithwaite, Bassett's final year playing its games in Cirencester, with an 11th place finish – the club's highest ever in the non-league pyramid – and record points haul in the division. This season sees the club playing at the New Gerard Buxton Sports Ground, which was opened in the summer of 2015 and with the Royal title now included within the club name.



WOOTTON BASSETT TOWN FOOTBALL CLUB STATS PAGE



| Points Progress v Last Season | | | |
|-------------------------------|------|------|------|
| | This | Last | +(-) |
| Brackley Town (H) # | 1 | 3 | (2) |
| Oxford City (A) | 3 | 0 | 1 |
| Ardley Utd (H) | 3 | 3 | 1 |
| Flackwell Heath (A) | 0 | 1 | 0 |
| Lydney Town (A)* | 0 | 3 | (3) |
| Ascot United (A) | 3 | 0 | 0 |
| Highworth Town (H) | 0 | 0 | 0 |
| Thame United (A) | 0 | 0 | 0 |
| Abingdon Utd (A) | 3 | 1 | 2 |
| Binfield (A) | 0 | 0 | 2 |
| Wokingham & Em (H)** | 3 | 1 | 4 |
| Tuffley Rovers (A)## | 1 | 3 | 2 |
| Abingdon Utd (H) | 3 | 1 | 4 |
| Longlevens (A)*** | 0 | 3 | 1 |
| Flackwell Heath (H) | 0 | 0 | 1 |
| Highmoor Ibis (A) | 0 | 0 | 1 |
| Thatcham (A) | 3 | 3 | 1 |
| Milton United (H) | 0 | 3 | (2) |
| Bracknell Town (H) | 0 | 0 | |

* Last season comparative Newbury
 ** Last season comparative Shrivensham
 *** Last season comparative Reading Town
 # Last season comparative Holyport
 ## Last season comparative Cheltenham Saracens

| | Appearances 2015/16 | Starts | As Sub | Total | Goals |
|--------------------|---------------------|--------|--------|-------|-------|
| 1 Dan Bailey | 26 | | | 26 | 3 |
| 2 Harvey Scholes | 23 | 3 | | 26 | 6 |
| 3 Dan Comer | 25 | | | 25 | |
| 4 Sam Packer | 23 | | | 23 | 3 |
| 5 Nathan Hawkins | 21 | 1 | | 22 | 1 |
| 6 Matt Cheetham | 17 | 5 | | 22 | |
| 7 Stephen Olphert | 19 | 2 | | 21 | 6 |
| 8 Dale Richards | 19 | 1 | | 20 | |
| 9 Curtis Meare | 19 | | | 19 | |
| 10 George Drewitt | 13 | 6 | | 19 | |
| 11 Steve Robertson | 18 | | | 18 | 20 |
| 12 Adam Corcoran | 16 | | | 16 | |
| 13 Tyler Sheppard | 5 | 10 | | 15 | 2 |
| 14 Steve Yearley | 14 | | | 14 | 2 |
| 15 Ryan Thomas | 5 | 9 | | 14 | 1 |
| 16 Richie Carter | 7 | 5 | | 12 | |
| 17 Kalum Youngsam | 5 | 5 | | 10 | |
| 18 Luke Kuczynski | 8 | | | 8 | |
| 19 Joe Hiscock | 4 | 3 | | 7 | 1 |
| 20 Dane Moulden | 4 | 1 | | 5 | |
| 21 Nathan Gambling | 2 | 2 | | 4 | 1 |
| 22 Cristy Millar | | | 4 | 4 | |
| 22 Hugo Vivash | | | 4 | 4 | |
| 23 Martin Sinclair | 2 | 1 | | 3 | |
| 24 Daniel Smith | | | 3 | 3 | |
| 25 Scott Walduck | 1 | 1 | | 2 | |
| 26 James Skinner | | | 2 | 2 | |
| 27 Callum Wright | 1 | | | 1 | |
| 28 Jake Covey | | | 1 | 1 | |
| 29 Jack Ellis | | | 1 | 1 | |
| Own Goals | | | - | | 1 |

| Last Season | |
|-------------|-------|
| Total | Goals |
| 46 | 18 |
| - | - |
| - | - |
| - | - |
| 44 | - |
| - | - |
| - | - |
| 45 | 1 |
| - | - |
| 36 | 1 |
| 16 | 12 |
| - | - |
| 29 | 1 |
| 40 | 10 |
| 12 | - |
| 46 | 1 |
| - | - |
| 13 | - |
| 31 | 3 |
| - | - |
| 39 | 16 |
| - | - |
| 6 | 1 |
| - | - |
| - | - |
| 12 | - |
| 37 | 6 |
| 27 | 2 |
| - | - |
| 5 | - |

Wiltshire Senior Cup Season Winners

| Season | Winners | Runners-Up |
|---------|-------------------------|---|
| 1886-87 | Swindon Town | Trowbridge Town |
| 1887-88 | Swindon Town | Swindon Temperance |
| 1888-89 | Swindon Town | Swindon Temperance |
| 1889-90 | Swindon Town | Trowbridge Town |
| 1890-91 | Swindon Town | Swindon Town Reserves |
| 1891-92 | Swindon Town | Swindon Town Reserves |
| 1892-93 | Swindon Athletic | Trowbridge Town |
| 1893-94 | Swindon Wanderers | Calne |
| 1894-95 | Trowbridge Town | Calne |
| 1895-96 | Swindon Town Reserves | West Swindon |
| 1896-97 | Trowbridge Town | Joint holders |
| 1897-98 | Swindon Town | Joint holders |
| 1897-98 | Trowbridge Town | Trowbridge Town |
| 1898-99 | Swindon Victoria | Swindon Victoria |
| 1899-00 | Chippenham Town | Deveses Town |
| 1900-01 | Warminster Town | Deveses Town |
| 1901-02 | Chippenham Town | Even Swindon United |
| 1902-03 | Warminster Town | Swindon Town Reserves |
| 1903-04 | Swindon Town Reserves | Wootton Bassett Town |
| 1904-05 | Melksham Town | Wootton Bassett Town |
| 1905-06 | Salisbury City | Swindon Haydon St W |
| 1906-07 | Swindon Town | Swindon Haydon St W |
| 1907-08 | Deveses Town | Trowbridge Town |
| 1908-09 | | Swindon Town Reserves Cup held by President |
| 1908-09 | | Trowbridge Town |
| 1909-10 | Salisbury City | Warminster Town |
| 1910-11 | Warminster Town | Salisbury City |
| 1911-12 | 38th Brigade RFA | Calne |
| 1912-13 | Calne Town | Trowbridge Town |
| 1913-14 | 3rd Wilts Regiment | Chippenham Town |
| 1919-20 | Swindon Town | Salisbury City |
| 1920-21 | Swindon Victoria | Stratton Reform |
| 1921-22 | Trowbridge Town | Chippenham Town |
| 1922-23 | Salisbury City | Deveses Town |
| 1923-24 | Spencers | Swindon Victoria |
| 1924-25 | Chippenham Town | Swindon Victoria |
| 1925-26 | Trowbridge Town | 1st Batt. Wilts Regiment |
| 1926-27 | Chippenham Town | Warminster Town |
| 1927-28 | Swindon Corinthians | Chippenham Town |
| 1928-29 | Chippenham Town | Swindon Corinthians |
| 1929-30 | Garrard Athletic | Trowbridge Town |
| 1930-31 | Chippenham Town | Swindon Corinthians |
| 1931-32 | Westbury United | Swindon Victoria |
| 1932-33 | Westbury United | Warminster Town |
| 1933-34 | Trowbridge Town | Westbury United |
| 1934-35 | Swindon Corinthians | Swindon Victoria |
| 1935-36 | Swindon Corinthians | Swindon Corinthians |
| 1936-37 | Swindon Victoria | Salisbury Corinthians |
| 1937-38 | Trowbridge Town | 1st Survey Coy R.A. |
| 1938-39 | Purton | Swindon Corinthians |
| 1945-46 | Salisbury Corinthians | Chippenham Town |
| 1946-47 | Swindon GWR Corinthians | Pewsey Vale |
| 1947-48 | Westbury United | Swindon BR Corinthians |
| 1948-49 | Purton | Swindon BR Corinthians |
| 1949-50 | Deveses Town | Calne & Harris United |
| 1950-51 | Purton | Salisbury City |
| 1951-52 | Westbury United | Bulford United |
| 1952-53 | Pinehurst YC | Swindon Victoria |
| 1953-54 | Pinehurst YC | Warminster Town |
| 1954-55 | Purton | Bulford United |
| 1955-56 | Swindon Victoria | Downton FC |
| 1956-57 | Deveses Town | Swindon B.R. |
| 1957-58 | Deveses Town | Melksham Town |
| 1958-59 | Deveses Town | Swindon B.R. |
| 1959-60 | Pinehurst | Deveses Town |
| 1960-61 | Deveses Town | Pinehurst |
| 1961-62 | Deveses Town | Malmesbury |
| 1962-63 | Deveses Town | Highworth Town |
| 1963-64 | Highworth Town | Westbury United |
| 1964-65 | Pinehurst | Chippenham Town |
| 1965-66 | Deveses Town | Aldboune |
| 1966-67 | Pinehurst | Deveses Town |
| 1967-68 | Deveses Town | Melksham Town |
| 1968-69 | Chippenham Town | Melksham Town |
| 1969-70 | Melksham Town | Deveses Town |
| 1970-71 | Deveses Town | Pinehurst |
| 1971-72 | Deveses Town | Sanford Youth |
| 1972-73 | Highworth Town | Deveses Town |
| 1973-74 | Deveses Town | Park |
| 1974-75 | Chippenham Town | Vickers |
| 1975-76 | Pinehurst | Deveses Town |
| 1976-77 | Corsham Town | Park |
| 1977-78 | Melksham Town | Avon Bradford |
| 1978-79 | Deveses Town | Farnedale Athletic |
| 1979-80 | Downton FC | Park |
| 1980-81 | Downton FC | Tisbury United |

Wiltshire Senior Cup Season Winners

| Season | Winners | Runners-Up |
|---------|-----------------------|-----------------------|
| 1981-82 | Avebury | Melksham Town |
| 1982-83 | Penhill | Chippenham Town |
| 1983-84 | Amesbury Town | Penhill |
| 1984-85 | Calne Town | Supermarine |
| 1985-86 | Supermarine | Penhill |
| 1986-87 | Penhill | Bernerton Athletic |
| 1987-88 | Purton | Wootton Bassett Town |
| 1988-89 | Purton | Highworth Town |
| 1989-90 | Swindon Athletic | Pewsey Vale |
| 1990-91 | Pewsey Vale | Swindon Athletic |
| 1991-92 | Wollen Sports | Downton FC |
| 1992-93 | Bernerton Heath Harl. | Wollen Sports |
| 1993-94 | Amesbury Town | Swindon Supermarine |
| 1994-95 | Purton | Downton FC |
| 1995-96 | Highworth Town | Amesbury Town |
| 1996-97 | Corsham Town | Marlborough Town |
| 1997-98 | Highworth Town | Purton |
| 1998-99 | Wootton Bassett Town | Pewsey Vale |
| 1999-00 | Pewsey Vale | Purton |
| 2000-01 | Wootton Bassett Town | Shrewton United |
| 2001-02 | Malmesbury Victoria | Pewsey Vale |
| 2002-03 | Melksham Town | Trowbridge Town |
| 2003-04 | Trowbridge Town | Corsham Town |
| 2004-05 | Corsham Town | Bernerton Heath Harl. |
| 2005-06 | Corsham Town | Melksham Town |
| 2006-07 | Corsham Town | Melksham Town |
| 2007-08 | Melksham Town | Laverstock & Ford |
| 2008-09 | Highworth Town | Warminster Town |
| 2009-10 | Calne Town | Laverstock & Ford |
| 2010-11 | Bernerton Heath Harl. | Bradford Town |
| 2011-12 | Calne Town | Bernerton Heath Harl. |
| 2012-13 | Melksham Town | Downton FC |
| 2013-14 | Melksham Town | Bradford Town |
| 2014-15 | Highworth Town | Bradford Town |

Wiltshire Senior Cup List of Cup Winners

| List of Cup Winners | Wins |
|-----------------------------|----------|
| Deveses Town | 14 |
| Swindon Town | 9 |
| Chippenham Town | 8 |
| Trowbridge Town | 8 |
| Purton | 7 |
| Melksham Town | 7 |
| Highworth Town | 6 |
| Corsham Town | 5 |
| Calne Town (& Harris Utd) | 4 |
| Pinehurst | 4 |
| Swindon Victoria | 4 |
| Westbury United | 4 |
| Salisbury City (old club) | 3 |
| Swindon Corinthians | 3 |
| Warminster Town | 3 |
| Amesbury | 2 |
| Bernerton Heath Harl. | 2 |
| Downton FC | 2 |
| Penhill | 2 |
| Pewsey Vale | 2 |
| Pinehurst YC | 2 |
| Swindon Athletic | 2 |
| Swindon Town Reserves | 2 |
| Wootton Bassett Town | 2 |
| 38th Brigade RFA | 1 |
| 3rd Wilts Regiment | 1 |
| Avebury | 1 |
| Garrard Athletic | 1 |
| Malmesbury Vics | 1 |
| Salisbury Corinthians | 1 |
| Spencers | 1 |
| Swindon Supermarine | 1 |
| Swindon GWR Corinthians | 1 |
| Swindon Wanderers | 1 |
| Wollen Sports | 1 |



Wiltshire Senior Cup

RWBTFC First Team Pen Pics

WILTSHIRE COUNTY SENIOR CUP SEASON 2015-16

First Round

| | | |
|-----------------------------------|-----------------------------|----------------------------------|
| Laverstock & Ford | 9 - 0 | Shrewton United |
| Westbury United | 0 - 3 | Melksham Town |
| Trowbridge Wanderers | 1 - 3 | Downton |
| Devizes Town | 1 - 2 | Bemerton Heath Harlequins |
| Saum Youth | 2 - 4 | Mere Town |
| Marlborough Town | 0 - 4 | Trowbridge Town |
| Royal Wootton Bassett Town | 3 - 1 | Ludgershall Sports |
| Warminster Town | 2 - 3 | Amesbury Town |
| Calne Town | 0 - 2 | Pewsey Vale |
| Corsham Town | 1 - 0 | Purton |
| Wroughton | 1 - 6 | Salisbury |
| Chippenham Park | W - L | Malmesbury Vics |
| New College Swindon | 2 - 1 | Wilts Calne Town |
| Vale of Pewsey | Bye but withdrawn from comp | |
| Bradford Town | Bye | |
| Highworth Town | Bye | |

Second Round

| | | |
|-----------------------------------|-------|----------------------------------|
| Chippenham Park | 2 - 3 | Bemerton Heath Harlequins |
| Downton | 0 - 2 | Trowbridge Town |
| Laverstock & Ford | 4 - 0 | Amesbury Town |
| Melksham Town | 3 - 1 | Bradford Town |
| Pewsey Vale | 0 - 4 | Corsham Town |
| Salisbury | 7 - 0 | Mere Town |
| Royal Wootton Bassett Town | 4 - 0 | New College |
| Highworth Town | Bye | |

Quarter Finals

| | | |
|-----------------------------------|---|---------------------------|
| Salisbury | v | Laverstock & Ford |
| Trowbridge Town | v | Bemerton Heath Harlequins |
| Royal Wootton Bassett Town | v | Melksham Town |
| Highworth Town | v | Corsham Town |



Curtis Meare Goal Keeper
Highly rated young goalkeeper who joins from Forest Green Rovers Academy having played a handful of games for Bassett in Season 2013-14.



Nathan Hawkins Defence
A cultured defender previously with Cirencester Town and Fairford. Regular last season who formed a great centre-back partnership with George Drewitt making 44 appearances



Daniel Comer Defence
Young defender, comfortable at both centre half and right back. Joining from Cirencester Academy and having been selected to represent Wiltshire Under 18s. We have high expectations for Dan.



Steve Yeardley Defence
Bassett lad who starts the season with 373 appearances before this season and 56 goals for the club. Battling midfield player or defender with tremendous energy and fans' favourite



Stephen Olphert Midfield
Joins from Shrivenham. Previously captained Clanfield where he made over 300 appearances and had reputation as one of Division One West's better players through his all-round game



Matt Cheatham Midfield
Hard tackling and skilful midfield player who joins us from Division One West Clanfield.



Richie Carter Midfield
Cultured midfield player. Last season made 46 appearances and will start the season having played 176 times for the club. Player of Year back in Season 2008-9.



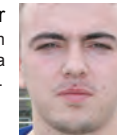
Ryan Thomas Midfield
Skilful midfield playmaker previously with Cricklade Town and Highworth Town. Suffered badly with injuries but on his day capable of opening up any defence.



Joe Hiscock Forward
Skilful and hard working player who returns to Bassett after starting the season with Division One West side Purton. Ex-New College player who broke into our First Team last season.



Dan Bailey Forward
Strong powerful player who can play in midfield or up front and was our top scorer last season with 18 goals from 46 appearances. Previously with Fairford Town.



Adam Corcoran Defence
This will be his 4th season with Bassett having re-joined the Club from Shrivenham. Previously with Calne Town a player who gives 100% every game.



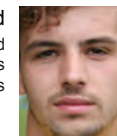
George Drewitt Defence
Classy defender, product of the Club's Youth Section. Both Manager and Players player of the season in 2014-15 when he made 36 appearances and scored 1 goal.



Dale Richards Defence
A product of the Club's youth section, a classy defender who made the step-up to adult football in style last season making 45 appearances.



Hugo Vivash Midfield
Enthusiastic youngster who has come up through the Youth Section. Played a handful of games for the First Team already and attracted rave reviews from the management.



Harvey Scholes Midfield
Attack minded midfield player with great technical ability who joins us from New College where he was a regular but now keen to step-up to the Premier.



Jack Ellis Midfield
Pacy player who re-joined the club at the back end of last season from Malmesbury. A product of one of the Club's most successful U18 sides.



Sam Packer Midfield
Returning to the Club from Shrivenham. Hard working and talented midfield player who played for the Club in season 2010-11 and 2013-14.



James Skinner Midfield
Regular last season making 37 appearances and scoring 6 times. Versatile player who can play either at the back or in midfield.



Tyler Sheppard Forward
Another product of Bassett's youth section. Former Swindon Town Centre of Excellence player who then joined Yeovil Town. Previously also with Highworth Town and Calne Town.



Steve Robertson Forward
Free scoring forward who re-joined the Club from Shrivenham last season. Despite joining part way through the season he netted an impressive 12 times in just 16 games.

Player Profile - Dale Richards

Away Travel Season 2015-16

Dale Richards (Defender)



A product of Bassetts' youth system, the left-footer was a standout performer in his first season of senior football, making the left back spot his own.

Combining athleticism, football intelligence, while also being strong in the air, Richards is also capable of performing effectively in a more advanced position. Indeed, he's a player who enjoys getting forward and chipped in with a pair of goals last season. His first, a header away against Brimscombe and Thrupp, levelled the scores in a game Bassetts went on to win, while his second helped put his team two goals to the good against Oxford City Nomads.

Richards joined the club as an 11 year old, featuring in a successful youth side alongside Reserve team regulars Scott Walduck and Jake Matthews, which won a number of North Wilts League and Cup titles.

His development was further enhanced while at Cirencester Academy, with that experience helping turn him into a full back who showed no fear in his first exposure to adult football despite being just 18 years old.

2014/15: 45 appearances, 2 goals.












See elsewhere in programme for current season appearances and goals.



The table below shows the addresses of all the grounds we will be visiting this coming **2015-16** Season. With 5 new teams next season the league has moved West a bit during the summer and added over 100 miles to the travel that needs to be made. The table below includes the postcode to enter into your Sat Nav. A rough estimate of the distance from Wootton Bassett is also shown.

Total away travel = **1,806** miles (2014-15: 1,704 miles)

Average away game travel (return journey) = **95.1** miles (2014-15: 89.7 miles)

| Team | | Address | Postcode | Distance (Miles) |
|----------------------|---|--|----------|------------------|
| Abingdon United |  | Northcourt Rd Abingdon, Oxfordshire | OX14 1PL | 46 |
| Ardley United |  | The Playing Fields, Oxford Road, Ardley | OX27 7NZ | 52 |
| Ascot United |  | Ascot Racecourse, Car Park 10, Winkfield Road, Ascot | SL5 7RA | 59 |
| Binfield |  | Hill Farm Lane, Binfield | RG42 5NR | 56 |
| Bracknell Town |  | Bracknell Town FC. Larges Lane, Bracknell | RG12 9AN | 56 |
| Brackley Town Saints |  | St James Park, Churchill Way, Brackley | NN13 7EJ | 58 |
| Brimscombe & Thrupp |  | 'The Meadow' ,London Road Brimscombe , Stroud | GL5 2SH | 27 |
| Flackwell Heath |  | Wilks Park, Magpie Lane, Heath End Road, Flackwell H | HP10 9EA | 68 |
| Highmoor Ibis |  | Palmer Park Stadium Wokingham Road Reading | RG6 1LF | 45 |
| Highworth Town |  | Elm Recreation Ground, Highworth | SN6 7DD | 12 |
| Kidlington |  | Yarnton Road, Kidlington | OX5 1AT | 43 |
| Longlevens |  | Saw Mills End, Corinium Avenue, Gloucester | GL4 3DG | 42 |
| Lydney Town |  | Lydney Recreation Ground, Swan Road, Lydney | GL15 5RU | 53 |
| Milton United |  | Potash Lane, Milton Heights | OX13 6AG | 40 |
| Oxford City Nomads |  | Court Place Farm Stadium, Marsh Lane, Oxford | OX3 0NQ | 54 |
| Thame United |  | The ASM Stadium, Meadow View Park, Tythrop Way, Thame, | OX9 3RN | 64 |
| Thatcham Town |  | Waterside Park,Crookham Hill, Thatcham, Berkshire | RG19 4PA | 36 |
| Tuffley Rovers |  | Glevum Park Lower Tuffley Lane, Tuffley, Gloucester | GL2 5DT | 41 |
| Wokingham & Emmbrook |  | The Triangle Ground Mill Lane Henley | RG9 4HB | 51 |

Half Time Quiz Answers



Name the players and managers shown in the pictures above and also say what the link is for the players in Column 1, what the link is for the pictures in Row 1, Row 3, and also the link for the pictures in Row 5. Finally what is the link for all of the players?

| | | | | |
|-----------------|-------------------|---------------|-----------------|------------------------|
| Allan Simonsen | Tony Yeboah | Franck Ribery | Kevin Keegan | Tony Woodcock |
| Rainer Bonhof | Hansi Muller | Oliver Kahn | Gunter Netzer | Sepp Maier |
| Jupp Heynkes | Ottmar Hitzfeld | Uli Hoeness | Jurgen Klinsman | Felix Magath |
| Berti Vogts | Thomas Berthold | Gerd Muller | Matthias Sammer | Karl-Heinz Rummennigge |
| Lothar Matthaus | Franz Beckenbauer | Philipp Lahm | Lukas Podolski | Thomas Hassler |

Column 1 Link = Borussia Monchengladbach

Row 1 Link = All foreign players playing in the Bundesliga

Row 3 Link = All went on to manage Bayern Munich

Row 5 link = All played over 100 games for Germany.

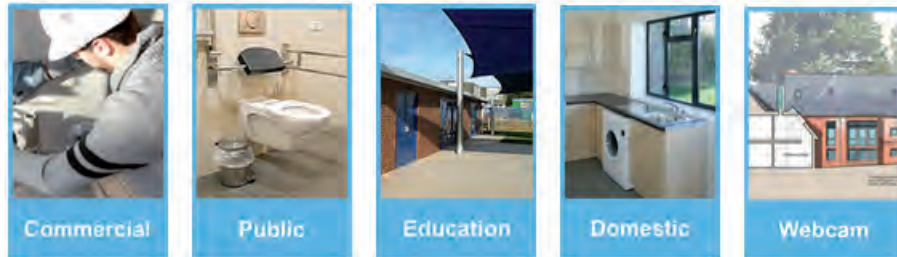
Overall link is the Bundesliga

First Team Player Kit Sponsorship

| Player | Shirt | Shorts | Socks |
|------------------|---|--------|-------|
| Curtis Meare | Whole kit sponsored by Arctic Services (01793 848502) | | |
| Luke Kuczynski | Whole kit sponsored by NV Consulting Solutions | | |
| Adam Corcoran | Whole kit sponsored by Andy Walduck | | |
| Dale Richards | Whole kit sponsored by Arctic Services (01793 848502) | | |
| Joe Hiscock | Whole kit sponsored by John & Kath Fellows | | |
| George Drewitt | Whole kit sponsored by Mark Smedley | | |
| Nathan Hawkins | Whole kit sponsored by David Thomas | | |
| Dan Comer | Whole kit sponsored by Dave & Carol Rowe | | |
| Steve Yeardley | Whole kit sponsored by C.S. Building Services | | |
| Stephen Olphert | Whole kit sponsored by Dave & Carol Rowe | | |
| Harvey Scholes | Whole kit sponsored by RWB Kitchen Design | | |
| Matt Cheetham | Whole kit sponsored by Roger Williamson | | |
| Hugo Vivash | Whole kit sponsored by NV Consulting Solutions | | |
| Ryan Thomas | Whole kit sponsored by C.S. Building Services | | |
| Sam Packer | Whole kit sponsored by Debbie and Paul Comer | | |
| Steve Robertson | Whole kit sponsored by C.S. Building Services | | |
| Dan Bailey | Whole kit sponsored by Mark Smedley | | |
| Tyler Sheppard | Whole kit sponsored by Charlotte Bull | | |
| Paul Braithwaite | Whole kit sponsored by Andy Walduck | | |
| Kara Gregory | Whole kit sponsored by Dave & Carol Rowe | | |

Cost = Shirt only (£25), Shorts (£15) and Socks (£10) and for the whole kit £40 (fixed at 2014-15 prices)
To arrange player kit sponsorship please contact Mark Smedley on 07887634887

Ladies Player Profiles & Report



Steele Davis has a well established reputation for outstanding service through the locality of Wiltshire. Our success over the years has been achieved by remaining true to our original 'family values' – putting our customers first and striving for excellent customer service from all our staff, whether office based or on the ground.

Contact Us: 01380 728738 enquiries@steeledavis.co.uk



Amber Eggerton - Midfield



Amber had a great season last time out winning Manager's Player of the Year and has recently taken on the responsibility of being Vice-Captain to Laura Jefferies.

An injury towards the end of last season has seen her struggle for games this season, but I believe she is close to working her way back in the team to get back to her best.

A tough-tackler and good organiser of players Amber has shown her real worth to the team since signing after coming through the ranks at Swindon Town..

After a very slow and hard start to the season the ladies team have finally found form and have got back to the winning ways of how they finished last season. After five straight defeats in both the league and cup competitions the girls found themselves rock bottom of the league with quite a big goal deficit to try and win back, but they have continued to work hard in training, which has paid off.

They took part in extra sessions put on by our newest sponsor - Ridgeway Leisure Centre in Partnership with Nuffield Health and really were determined to start picking up the points, which they did when they visited Dursley at the end of October. A well-earned point was just what was needed to give the girls the confidence to push on in the league.

We welcomed several new players from Swindon Spitfires, Beth Turner, Debbie Rose, Jess Dent and Jules Caton, which has given the whole squad a boost and more competition for places. Debbie and Jess played their first game in our first win of the season at home to Forest of Dean, which we won 6-0. Debbie got off to a great start by getting on the score sheet and Jess was voted player of the match. All players have settled in well and Jules is now looking forward to playing her first match for the team.











We now have a lot more strength in depth within the squad, which will only help us in our push to finish as high up the league as possible. The girls are now celebrating three straight wins, being unbeaten in the last four games and moving from bottom of the league up into 4th spot in just 5 weeks. It is a remarkable turnaround and I am so proud of the girls for sticking with it and working hard to start picking up the points.

We have a weekend off now before travelling to 2nd placed AEK Boco, which is always a tough game, but maybe we can revenge an earlier 4-1 defeat in the Gloucestershire League Women's Cup to help us work our way up the table... The ladies last game of 2015 will be played at home at the New Gerard Buxton Sports Ground on Sunday 20th December, 2pm ko when table toppers Almondsbury UWE are the visitors. Come along and show your support!

Becky

Ladies Team Player Kit Sponsorship

Half Time Quiz

| Player | | Shirt | Shorts | Socks |
|----------------------|---|---|--------|-------|
| Nikki Butler | | | | |
| Tasha Harper | | | | |
| Caroline Hook | | | | |
| Claire Edwards-Evans | | | | |
| Jenny Galvin |  | | | |
| Sophie Harper |  | | | |
| Laura Jefferies |  | Whole kit sponsored by Virtua Mobile (www.virtua.uk.com) | | |
| Jody Nicholls | | | | |
| Sam Wood |  | | | |
| Lisa Curtis | | | | |
| Mandy Cook | | | | |
| Joanne Duncan | | | | |
| Kate Edwards |  | | | |
| Amber Eggerton |  | | | |
| Jenna Blake | | | | |
| Zoe Holland |  | | | |
| Charlotte Harrison | | | | |
| Tina Williams | | | | |
| Aly Lyons | | Whole kit sponsored by Paul Braithwaite | | |
| Emily Bogg |  | | | |
| Laura Gammon |  | Whole kit sponsored by Chris Jones | | |
| Katherine Wilson | | | | |
| Becky Gammon |  | Whole kit sponsored by Mark Smedley | | |



Name the players and managers shown in the pictures above and also say what the link is for the players s in Column 1, what the link is for the pictures in Row 1, Row 3, and also the link for the pictures in Row 5. Finally what is the link for all of the players?

Cost = Shirt only (£25), Shorts (£15) and Socks (£10) and for the whole kit £40 (fixed at 2014-15 prices)
To arrange player kit sponsorship please contact Becky Gammon on 07825 336479

Fixtures, Results and Tables

Season 2015-16

Uhsport Hellenic League



Allen and Foxworthy
paaf scaffolding services



Roslea House, Hargreaves Road
Groundwood Industrial Estate
Swindon
Wiltshire
SN25 5AZ

www.allenandfoxworthy.co.uk
info@allenandfoxworthy.co.uk
Tel: 01793 706634
Tel: 01793 723885

Allen & Foxworthy Scaffolding was formed in May 1998. The senior management has in excess of 100 years experience within the Scaffolding Industry, which has enabled the company to provide a wide variety of organisations with the level of expertise major clients have come to depend upon.

As a company their experience ranges from small works and domestic properties to national house building projects; major construction developments with MCG Companies, Railway stations to public housing projects, and P.F.I. Schools and Hospitals. They also have a specialist works division covering palaces, monuments and castles and are preferred suppliers to the National Trust and English Heritage.

Allen & Foxworthy's portfolio boasts clients such as Monument in the City of London, Hampton Court Palace in South West London and the Tower of London.

They are also a proud member of the National Access and Scaffolding Confederation (NASCC), providing assurance that their scaffold structures are constructed to a sound a professionally recognised standard.

| Hellenic League Premier Season 2015-16 | Abingdon Utd | Ardley Utd | Ascot Utd | Binfield | Brackley Town | Bracknell Town | Brimscombe & Thrupp | Flackwell Heath | Highmoor Ibis | Highw'th Town | Kidlington | Long'ns | Lydney Town | Milton Utd | Oxford City Nomads | Thame United | Thatcham Town | Tuffrey Rovers | Woking'm & E | W.Bassett Town |
|--|--------------|------------|-----------|----------|---------------|----------------|---------------------|-----------------|---------------|---------------|------------|---------|-------------|------------|--------------------|--------------|---------------|----------------|--------------|----------------|
| Abingdon Utd | 1-5 | | | | 3-0 | 6-4 | 0-1 | 3-2 | 1-3 | 0-4 | 0-6 | 2-1 | | 3-3 | 0-3 | | | 1-2 | 2-0 | 2-4 |
| Ardley Utd | | 1-3 | | | | | | 0-6 | | | | | | | | | | 2-1 | | |
| Ascot United | | | 3-0 | | | | | 3-0 | 1-0 | 0-1 | | | 2-1 | | 4-2 | 1-1 | | 0-0 | | 1-4 |
| Binfield | | 4-0 | 1-1 | | 4-1 | 2-2 | 1-2 | 6-0 | | | 1-2 | | | 0-0 | | 0-2 | | | | 2-0 |
| Brackley Town | | | 3-0 | | | | 7-2 | 2-5 | 2-4 | 2-5 | 2-2 | | 1-2 | | | | | 3-2 | | |
| Bracknell Town | | | 0-1 | | 2-1 | | | | 1-2 | 1-3 | 1-1 | | 1-1 | | | | | | 0-3 | |
| Brimscombe & T | 1-1 | | 1-1 | | 2-1 | | | | | | 2-4 | | 4-2 | | 4-0 | 3-0 | | | | 4-1 |
| Flackwell Heath | | | 2-0 | | 4-0 | 3-2 | | | 3-3 | | | | | 2-1 | | | | 4-3 | 4-3 | 7-2 |
| Highmoor Ibis | 6-0 | 2-1 | 0-1 | | 3-0 | | | | | 1-2 | | | | 2-1 | | | 1-1 | 0-3 | | |
| Highw'th Town | | | | 2-3 | | | 3-0 | 1-2 | | | | 3-1 | 2-2 | | | | 1-2 | 5-0 | | |
| Kidlington | | 5-1 | 3-1 | 5-0 | | | | | 1-1 | 1-0 | | 4-1 | 4-2 | | | 1-0 | 2-1 | | | |
| Longleves | 3-0 | | 1-1 | 1-2 | 1-0 | 3-1 | | | 0-1 | | | 3-0 | 1-4 | | 1-2 | | 2-1 | 3-2 | 3-2 | |
| Lydney Town | 3-1 | | 0-3 | | | | 0-1 | 1-3 | | | | | | 0-0 | 3-2 | 2-2 | | 1-1 | 3-0 | 3-2 |
| Milton Utd | | 2-1 | 0-2 | 0-2 | | 3-3 | 0-1 | | 2-3 | 0-2 | 0-5 | | | 0-2 | 0-1 | 1-4 | | | | 0-2 |
| Oxford City Nom | | | | | | 2-0 | | 2-2 | 3-1 | | 2-0 | 4-0 | | | | | 1-2 | | | |
| Thame United | 2-0 | 0-3 | | 1-2 | 5-0 | | | | 2-1 | | 0-3 | | | 0-1 | | | | | | 3-1 |
| Thatcham Town | 6-2 | 3-1 | 2-1 | 2-0 | | 6-2 | 0-0 | 3-2 | | | | | | 3-2 | | | | | 2-1 | 1-2 |
| Tuffrey Rovers | | | 1-2 | | 4-1 | | 2-1 | | | | | | 0-0 | 2-3 | 2-4 | 1-2 | | | 4-0 | 2-2 |
| Wokingham & E | 5-0 | | 0-3 | 1-2 | 1-4 | | | | | 0-5 | | 0-1 | | 0-0 | 1-3 | 1-2 | 1-6 | | | |
| W.Bassett Town | 2-0 | 2-1 | | | 1-1 | | | 0-3 | | 0-2 | | | | 0-2 | | | | | 2-1 | |

2015-2016 Season UHSport Hellenic League Premier Division as at 23rd November 2015

| | P | W | D | L | F | A | Pts |
|---------------------------------|-----------|----------|----------|-----------|-----------|-----------|-----------|
| 1 Kidlington | 18 | 13 | 3 | 2 | 50 | 17 | 42 |
| 2 Thatcham Town | 17 | 13 | 2 | 2 | 52 | 22 | 41 |
| 3 Flackwell Heath | 18 | 13 | 2 | 3 | 58 | 29 | 41 |
| 4 Ascot United | 21 | 12 | 4 | 5 | 35 | 21 | 40 |
| 5 Highworth Town | 17 | 12 | 1 | 4 | 46 | 15 | 37 |
| 6 Binfield | 18 | 10 | 3 | 5 | 36 | 22 | 33 |
| 7 Highmoor-Ibis | 20 | 10 | 3 | 7 | 38 | 31 | 33 |
| 8 Thame United | 18 | 10 | 2 | 6 | 26 | 21 | 32 |
| 9 Longleves AFC | 19 | 10 | 1 | 8 | 32 | 30 | 31 |
| 10 Brimscombe & Thrupp | 16 | 9 | 3 | 4 | 29 | 23 | 30 |
| 11 Oxford City Nomads | 17 | 9 | 1 | 7 | 33 | 28 | 28 |
| 12 Royal Wootton Bassett | 18 | 7 | 2 | 9 | 28 | 38 | 23 |
| 13 Lydney Town | 18 | 5 | 6 | 7 | 26 | 32 | 21 |
| 14 Tuffrey Rovers | 19 | 5 | 4 | 10 | 31 | 38 | 19 |
| 15 Milton Utd | 21 | 4 | 5 | 12 | 21 | 38 | 17 |
| 16 Abingdon United | 22 | 5 | 2 | 15 | 27 | 63 | 17 |
| 17 Ardley United | 19 | 5 | 1 | 13 | 26 | 48 | 16 |
| 18 Brackley Town Saints | 19 | 4 | 2 | 13 | 32 | 57 | 14 |
| 19 Bracknell Town | 16 | 2 | 4 | 10 | 24 | 40 | 10 |
| 20 Wokingham & Emmbrook | 21 | 2 | 1 | 18 | 22 | 59 | 7 |

2015-2016 Season UHSport Hellenic League Division One (West) as at 23rd November 2015

| | P | W | D | L | F | A | Pts |
|--------------------------|----|---|---|---|----|----|-----|
| 1 Fairford Town | 11 | 8 | 1 | 2 | 30 | 14 | 25 |
| 2 Cheltenham Saracens | 9 | 7 | 1 | 1 | 26 | 10 | 22 |
| 3 Purton | 13 | 5 | 5 | 3 | 25 | 19 | 20 |
| 4 Easington Sports | 12 | 5 | 2 | 5 | 23 | 24 | 17 |
| 5 Carterton | 8 | 5 | 1 | 2 | 20 | 15 | 16 |
| 6 North Leigh United | 12 | 5 | 1 | 6 | 23 | 30 | 16 |
| 7 Hook Norton | 7 | 4 | 1 | 2 | 13 | 8 | 13 |
| 8 Clanfield 85' | 13 | 3 | 4 | 6 | 18 | 27 | 13 |
| 9 Cirencester Town Dev' | 11 | 2 | 6 | 3 | 24 | 28 | 12 |
| 10 Letcombe | 10 | 3 | 3 | 4 | 14 | 18 | 12 |
| 11 Tytherington Rocks | 13 | 3 | 2 | 8 | 15 | 26 | 11 |
| 12 Shortwood United Res' | 8 | 3 | 2 | 3 | 21 | 17 | 10 |
| 13 New College Swindon | 9 | 3 | 0 | 6 | 7 | 13 | 9 |
| 14 Shrivenham | 8 | 1 | 1 | 6 | 8 | 18 | 4 |

* = One point deducted for playing ineligible player

2015-2016 Season UHSport Hellenic League Division One (East) as at 23rd November 2015

| | P | W | D | L | F | A | Pts |
|------------------------|----|---|---|----|----|----|-----|
| 1 Penn & Tylers Green | 11 | 8 | 2 | 1 | 36 | 7 | 26 |
| 2 Finchampstead | 13 | 7 | 2 | 4 | 26 | 13 | 23 |
| 3 Bicester Town | 11 | 6 | 3 | 2 | 27 | 20 | 21 |
| 4 Headington Amateur's | 10 | 6 | 2 | 2 | 23 | 8 | 20 |
| 5 Henley Town | 10 | 6 | 1 | 3 | 29 | 18 | 19 |
| 6 Didcot Town Res' | 12 | 5 | 2 | 5 | 33 | 26 | 17 |
| 7 Holyport | 10 | 5 | 1 | 4 | 19 | 21 | 16 |
| 8 Rayners Lane | 10 | 4 | 2 | 4 | 21 | 17 | 14 |
| 9 Chinnor | 8 | 4 | 1 | 3 | 18 | 11 | 13 |
| 10 Chalfont Wasps | 7 | 3 | 2 | 2 | 12 | 14 | 11 |
| 11 Wantage Town Res' | 13 | 3 | 2 | 8 | 19 | 32 | 11 |
| 12 Woodley United | 10 | 2 | 2 | 6 | 11 | 22 | 8 |
| 13 Old Woodstock Town | 9 | 2 | 0 | 7 | 5 | 31 | 6 |
| 14 Reading Town | 10 | 0 | 0 | 10 | 10 | 49 | 0 |



"Bassett Pies"



Delicious pies, made using fresh, local ingredients

ON SALE NOW



Handmade Locally Produced



Steak & Ale – Chicken & Mushroom – Spicy Turkey
Sold at Kiosk during Match Days – Access via Stadium Pitch

Ladies Section In Focus

Gloucestershire County Womens League Season 2015-16

Division One Fixtures

| Date | Opponents | H/A | Competition | Result | Scorers |
|-----------|--------------------------|-----|-------------|---------|--|
| 6-Sep-15 | Downend Flyers | H | W FA Cup | L 1 - 5 | Bogg |
| 13-Sep-15 | Bristol Ladies Union Dev | H | League | L 1 - 8 | Jefferies |
| 20-Sep-15 | Cheltenham Town Dev | A | League | L 1 - 5 | Jefferies |
| 4-Oct-15 | Cirencester Town | A | League | L 1 - 3 | Gammon |
| 18-Oct-15 | AEK Boco | H | L. Cup | L 1 - 4 | Bogg |
| 25-Oct-15 | Dursley Town | A | League | D 2 - 2 | Gammon, Hook |
| 1-Nov-15 | Forest of Dean | H | League | W 6 - 0 | Bogg, Gammon, Rose, Edwards, Hook, Egerton |
| 8-Nov-15 | Longlevens | H | League | W 4 - 2 | Bogg 2, Gammon 2 |
| 22-Nov-15 | St Nicholas | H | League | W 3 - 1 | Jefferies 2, Gammon |
| 6-Dec-15 | AEK Boco | A | League | | |
| 20-Dec-15 | Almondsbury UWE | H | League | | |
| 10-Jan-16 | Almondsbury UWE | A | League | | |
| 17-Jan-16 | Bristol & West | H | League | | |
| 24-Jan-16 | Bristol Ladies Union Dev | A | League | | |
| 31-Jan-16 | Cheltenham Town Dev | H | League | | |
| 7-Feb-16 | Cirencester Town | H | League | | |
| 21-Feb-16 | Dursley Town | H | League | | |
| 28-Feb-16 | Forest of Dean | A | League | | |
| 6-Mar-16 | Longlevens | A | League | | |
| 13-Mar-16 | St Nicholas | A | League | | |
| 3-Apr-16 | AEK Boco | H | League | | |
| 17-Apr-16 | Bristol & West | A | League | | |

Gloucestershire County Womens League Season 2015-16

Division One League Table as at 23rd November 2015

| | P | W | D | L | F | A | Pts |
|-------------------------------------|---|---|---|---|----|----|-----|
| 1 Almondsbury UWE | 6 | 5 | 1 | 0 | 15 | 3 | 16 |
| 2 AEK Boco Ladies | 5 | 5 | 0 | 0 | 20 | 3 | 15 |
| 3 Cheltenham Town Development | 7 | 5 | 0 | 2 | 20 | 9 | 15 |
| 4 Wootton Bassett Ladies | 7 | 3 | 1 | 3 | 22 | 21 | 10 |
| 5 St Nicholas Ladies Reserves | 6 | 2 | 2 | 2 | 12 | 12 | 8 |
| 6 Longlevens Womens FC | 7 | 1 | 3 | 3 | 6 | 14 | 6 |
| 7 Forest of Dean Ladies | 5 | 1 | 2 | 2 | 3 | 10 | 5 |
| 8 Cirencester Town Ladies | 6 | 1 | 1 | 4 | 5 | 8 | 4 |
| 9 Dursley Town Ladies | 5 | 1 | 1 | 3 | 6 | 18 | 4 |
| 10 Bristol Ladies Union Development | 4 | 1 | 0 | 3 | 8 | 5 | 3 |
| 11 Bristol & West Ladies | 4 | 0 | 1 | 3 | 3 | 13 | 1 |



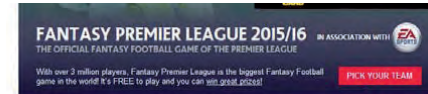
Fantasy Football

Royal Wootton Bassett Town FC

Fantasy Football Competition - Season 2015-16

As at 25th November 2015

| | Week | Total |
|--------------------------|-----------------|---------|
| 1 Iatorrefc | Alejandro Stock | 88 756 |
| 2 Dirty Oars | Andrew Guppy | 57 718 |
| 3 Gerrard's Slippers | Chris Guppy | 103 718 |
| 4 Michu at De Gea Ba | Dane Moulden | 62 714 |
| 5 Benny Rejects | Benny Brown | 77 710 |
| 6 SuarezBitesBack | Rockin Robin | 67 706 |
| 7 Largie's Lads | Scott Large | 64 705 |
| 8 Cupid Punts | Michael Case | 62 693 |
| 9 High flying | Samuel Case | 58 690 |
| 10 Inter Minan | Joe topping | 75 684 |
| 11 Shumps Gooner get ya | Steven Humphrey | 71 680 |
| 12 Square Ball Tel | David Topping | 53 675 |
| 13 Gillie's Army FC | Ryan Gillie | 69 670 |
| 14 Charlie's Angels | Karen Avery | 35 668 |
| 15 Liverpool | Ethan Joe | 66 667 |
| 16 Viva Paul Curtis... | SJ Lawro | 66 657 |
| 17 Gotta be my year | Becky Gammon | 38 653 |
| 18 Coutinho Defence Up | Jacob Hayden | 59 649 |
| 19 Jose Fonte Baby | Josh Dimond | 44 647 |
| 20 C-Bomb's | Jack Paish | 69 643 |
| 21 Fantasy XI | Reece Holloway | 47 641 |
| 22 SMG | James Skinner | 67 641 |
| 22 fc barcelona | Ethan Alejandro | 48 639 |
| 24 JoseMoanalot | Jose Moanalot | 67 633 |
| 25 barcaloaner | Murcia Guy | 63 630 |
| 26 Tekkerslovakia | Ryan Collins | 48 626 |
| 27 MerkelsPanzaDivision | Helmut Cheese | 65 624 |
| 28 Kids R Utd | Paul Gillie | 43 623 |
| 29 Sticks & John Stones | Ollie Sinclair | 67 621 |
| 30 Yoyo XI | Scott Smedley | 58 621 |
| 31 Sims United | Simon G | 63 613 |
| 32 Nottingham Florist | James Evans | 76 612 |
| 33 Footysavedmybacon | Ken G | 67 609 |
| 34 BainesONtoast | Oliver Case | 36 595 |
| 35 Swift's bathwater FC | Phillip Forster | 53 593 |
| 36 The Koeman League | Stuart Smedley | 67 589 |
| 37 Irish Allstars | Sam Jackson | 57 587 |
| 38 royal woodpecker utd | bryan wood | 43 587 |
| 39 Stick The Blue Flag | Mark Smedley | 62 585 |
| 40 United We Stand | Simon Jones | 41 584 |
| 41 Swagenham&Redbridge | Dave Groom | 63 584 |
| 42 Moves like Agger | Andy Tye | 57 584 |
| 43 Hannover Hangover | Ben Gerrish | 87 581 |
| 44 Spiral Tribe FC | joe hockham | 64 579 |
| 45 Gregs Demons | Ian Bull | 68 575 |
| 46 FirstTimeLucky? | Keren Brojde | 59 575 |
| 47 Winning Fc | Jayden Handel | 39 570 |
| 48 MyLittleBony FC | Euan Burke | 45 568 |
| 49 David Beldon's kids | Rhys Holdsworth | 47 568 |
| 50 Halls' Town | Tim Hall | 34 565 |
| 51 Rigs Warriors | Paul Haworth | 59 561 |
| 52 Joe's hoe's | joe dixon | 37 560 |
| 53 Wrighty's Warriors | Callum Wright | 28 557 |
| 54 Royal rovers | Teresa Andow | 58 557 |
| 55 REUS krispies | Harry Gough | 32 557 |
| 56 Pathetic Athletic | Alex Webb | 82 549 |
| 57 Mein Bergkampf | george Fry | 22 548 |
| 58 Monye XI | hugo vivash | 54 543 |
| 59 Le Saux Solid Crew | Ryan Thomas | 41 540 |
| 60 ?????????? enough!!!! | luke jones | 58 538 |
| 61 poops | thomas haworth | 39 537 |
| 62 Crazy's Robins | Paul Burke | 65 536 |
| 63 FC United of Wood | Ali Wood | 47 536 |
| 64 PC's Havin A Party | Paul Curtis | 38 526 |
| 65 bassett legend | steve thomas | 44 524 |
| 66 Who Ate All Depays? | JACK HOLDER | 30 523 |
| 67 QPR | joe Wych | 59 510 |



Previous Winners

- 2014/15 – Andy Guppy (Dirty Oars)
- 2013/14 – Michael Case (Cupid Punts)
- 2012/13 – Sam Lawro (Top of the Perch -19)
- 2011/12 – Sam Lawro (19- Top Of Your Perch)
- 2010/11 – Josh Dimond (Liquidation FC)

Gameweek 13 Dream Team



The Non-League Paper Article

Reserves In Focus



Buy it every Sunday from your local newsagent
Or Subscribe at www.thenonleaguefootballpaper.com

By Matt Badcock

Class of '92 and Non-League Volunteers

IF you watched the first part of the Salford City documentary on the BBC a week last Thursday, you probably know more about striker Gareth Seddon than you ever wanted or wished.

For anyone who has been wrapped up in the latest TV box set, the Evo-Stik NPL Premier club are owned by the Class of '92 – Neville brothers Gary and Phil, Ryan Giggs, Paul Scholes and Nicky Butt.

Their arrival last summer received the predictable mixed reaction. Some say good for the game, others wondering when the circus would leave town.

As well as Seddon, a model by day, on the toilet and dancing around in his pants, the documentary – Class of '92: Out of their League – showed how committed the Manchester United greats are.

The club throws the doors open to everything. We even eavesdrop on the conversation between the famous five that sealed the fate of former manager Phil Power.

Gary Neville is clearly at the forefront, keen to know everything that's going on – the conversation with chairman Karen Baird about the club's illegal Sky box a particularly amusing snippet.

Could their involvement be a sign of things to come? Lots of Premier League footballers are earning lots of money. Whereas in the past many would need to get a proper job or move into coaching and management to keep bringing home the bacon, the retiring footballers of today probably have more time on their hands and more disposable income.

It's a great way to give something back to the game. Take on a local club, help blood young talent and contribute to grass-roots.

Of course the Class of '92 have already been rewarded for their troubles. Promotion from Step 4 in their first season and an FA Cup first round proper appearance this weekend. What shone through the programme, however, was the dedication and commitment from the volunteers.

Take turnstile operator Jim, who also built the new toilet block, or Babs running the snack bar. That's what football is all about at this level, away from the Premier League bubble and the over-inflated egos and prices.

You can have all the backing in the world, but at this level you still need the heart and love of people prepared to give up their time for nothing. Burgers don't flip themselves and weeds don't just disappear from the terraces.

This very programme you're reading now was no doubt put together with the help of volunteers and free contributions.

The harsh reality of Non-League football is volunteers are on the decline. In the modern world, time is at a premium and, for some, there are better things to be doing.

As a consequence committees are slimming down and the remaining stalwarts are taking on more jobs just to keep clubs going. With it, I fear, we'll see more clubs just slip away.

So, if you've got some spare time put your hand up and become a Non-League hero.



WOOTTON BASSETT TOWN FOOTBALL CLUB SEASON 2015-16 RESERVE TEAM FIXTURES - WILTSHIRE COUNTY LEAGUE

| Date | Opponents | H/A | Comp | Result | Scorers |
|------|----------------------------------|-----|--------|---------|------------------------------|
| Sat | 15-Aug-15 Ludgershall Sports | A | League | D 2 - 2 | Shepherd, Large |
| Tue | 18-Aug-15 Wroughton | A | League | L 2 - 3 | Covey, Dixon |
| Sat | 22-Aug-15 Melksham Town Res | A | League | L 0 - 1 | |
| Tue | 25-Aug-15 Chippenham Park Dev | H | League | W 3 - 1 | Shaw 2, Clark |
| Sat | 29-Aug-15 Wroughton | H | League | L 4 - 5 | Clark, Ellis, Shaw, Large |
| Sat | 05-Sep-15 Wilts Calne Town | A | League | W 4 - 2 | Clarke 2, Tidy, Hayden |
| Sat | 12-Sep-15 Shrewton United | A | League | L 1 - 6 | Tidy |
| Sat | 19-Sep-15 Devizes Town Res | H | League | L 2 - 4 | Tidy 2 |
| Sat | 26-Sep-15 Corsham Town Res | A | League | D 1 - 1 | Shepherd |
| Sat | 03-Oct-15 Andover New Street Sw* | H | League | D 3 - 3 | Shepherd 3 |
| Sat | 10-Oct-15 Vale of Pewsey | A | League | D 1 - 1 | Matthews |
| Sat | 24-Oct-15 Devizes Town Res | A | League | L 0 - 1 | |
| Sat | 31-Oct-15 Trowbridge Wanderers | H | League | L 2 - 3 | Adams 2 |
| Sat | 14-Nov-15 Corsham Town Res | H | League | W 4 - 3 | Tidy, Shepherd, Groom, Adams |
| Sat | 28-Nov-15 Chippenham Park Dev | A | League | | |
| Sat | 05-Dec-15 Malmesbury Vics | A | League | | |
| Sat | 19-Dec-15 Melksham Town Res | H | League | | |
| | Ludgershall Sports | H | League | | |
| | Malmesbury Vics | H | League | | |
| | Marlborough Town | H | League | | |
| | Marlborough Town | A | League | | |
| | Sarum Youth | A | League | | |
| | Sarum Youth | H | League | | |
| | Shrewton United | H | League | | |
| | Trowbridge Town | H | League | | |
| | Trowbridge Town | A | League | | |
| | Trowbridge Wanderers | A | League | | |
| | Vale of Pewsey | H | League | | |
| | Wilts Calne Town | H | League | | |
| | Wilts Calne Town | H | Cup | | |

* Andover New Street Swifts have withdrawn from the league

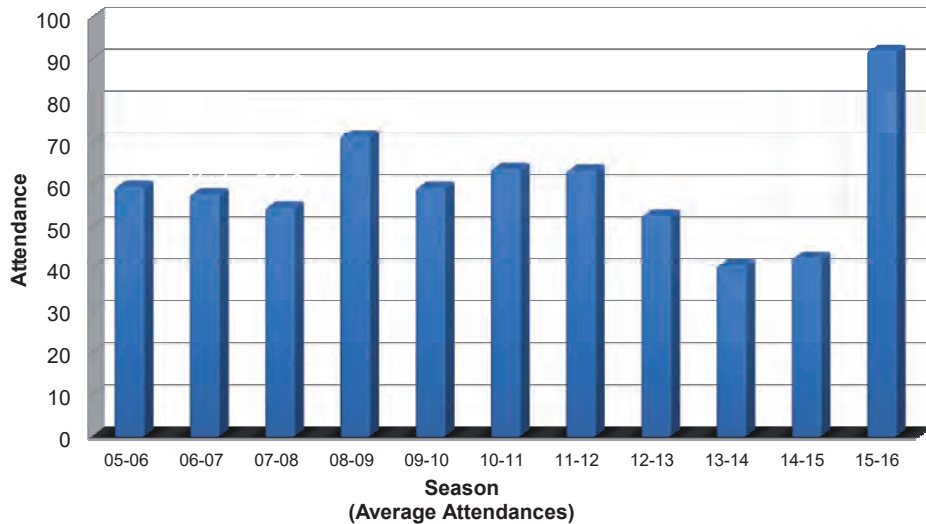
Wiltshire County Football League Premier Division Season 2015-16 as at 22nd November 2015

| | P | W | D | L | F | A | PTS |
|---|-----------|----------|----------|----------|-----------|-----------|-----------|
| 1 Trowbridge Town FC | 12 | 11 | 1 | 0 | 59 | 11 | 34 |
| 2 Shrewton Utd FC | 14 | 10 | 2 | 2 | 53 | 19 | 32 |
| 3 Malmesbury Victoria FC | 14 | 9 | 1 | 4 | 49 | 23 | 28 |
| 4 Melksham Town FC Res | 12 | 8 | 1 | 3 | 33 | 14 | 25 |
| 5 Ludgershall Sports FC | 12 | 6 | 4 | 2 | 28 | 20 | 22 |
| 6 Corsham Town FC Res | 16 | 7 | 1 | 8 | 37 | 39 | 22 |
| 7 Trowbridge Wanderers FC | 11 | 7 | 0 | 4 | 28 | 20 | 21 |
| 8 Wroughton FC | 12 | 6 | 2 | 4 | 38 | 34 | 20 |
| 9 Chippenham Park FC Development | 15 | 6 | 1 | 8 | 32 | 31 | 19 |
| 10 Devizes Town FC Res | 14 | 6 | 1 | 7 | 17 | 32 | 19 |
| 11 Royal Wootton Bassett Town FC Res | 13 | 3 | 3 | 7 | 26 | 33 | 12 |
| 12 Marlborough Town FC | 12 | 3 | 3 | 6 | 17 | 29 | 12 |
| 13 Vale of Pewsey FC | 12 | 2 | 2 | 8 | 10 | 52 | 8 |
| 14 Wilts Calne Town FC | 12 | 1 | 1 | 10 | 19 | 46 | 4 |
| 15 Sarum Youth FC | 13 | 0 | 1 | 12 | 13 | 56 | 1 |

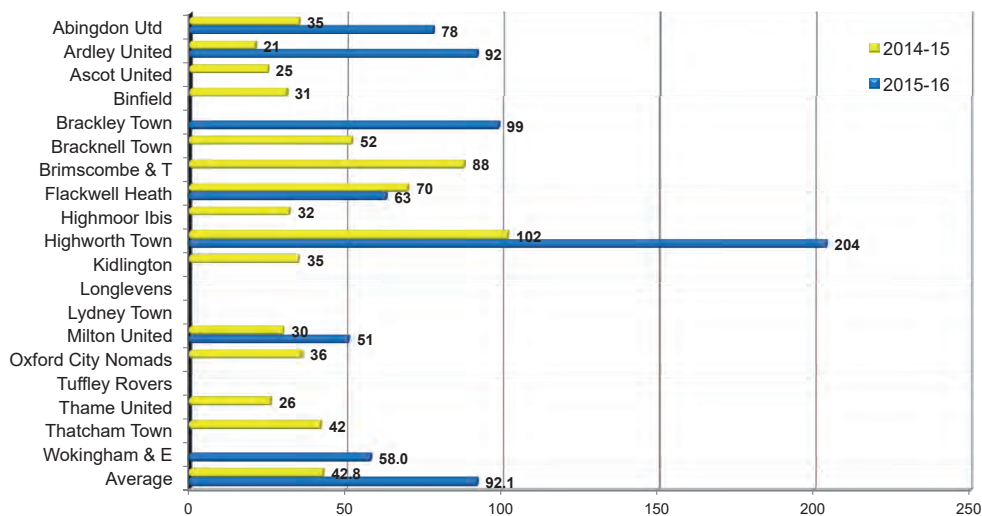
RWBTFC Attendances

Editor's Non-League Scene

WBTFC Average Home League Attendances - Last 10 Years plus current season



WBTFC Attendances - Season 2015-16 (and comparison to 2014-15)



F.A. Vase

Last Saturday saw just three Hellenic League Premier Division fixtures, primarily due it being FA Vase second round weekend.

It was a pretty successful afternoon for those Hellenic League sides left in - and, in the case of Highworth Town, joining - the competition at this stage, with five of seven teams advancing. Only Flackwell Heath and Carterton came a cropper, with Ascot United, Brimscombe and Thrupp, Highworth, Kidlington and Thame United all advancing. The latter two sides will now meet in the third round in an enticing Oxfordshire derby. Ascot and Highworth, meanwhile, both have home draws. For the former, quarter finalists last year, it's a local derby against Camberley Town of the Combined Counties League.

Although that no doubt should attract a big crowd, Highworth were handed arguably the plum tie of the round with a Wiltshire derby at The Elms against Steve Claridge's Salisbury - second favourites behind Hereford with some bookmakers to lift the Vase. Facing such tough opposition at this stage mean that John Fisher's side certainly have a big task on their hands if they are to repeat the heroics of last year when they made it all the way to the semi-finals.

Finally, for Brimscombe it's a trip to the south coast to face Wessex League Moneyfields. Of the ties against non-Hellenic opponents, Brimscombe's certainly appears to be the friendliest based on Moneyfields' current league position. Yet, the Portsmouth-based side finished fourth in the league last year so will still be a stern test.

County hopes

Thanks to Highworth being paired with Salisbury, Wiltshire is guaranteed at least one representative in the final 32 of the Vase.

Melksham Town, our opponents in the Wiltshire Senior Cup quarter final in December, were ousted in the second round at the hands of Bodmin Town, the Cornish side triumphing 3-1. While Melksham will be hoping to repeat as champions of the Western League Premier Division, they'll be hoping to add further silverware to compensate for their Vase exit, and Bassett will certainly need to be made of stern stuff when they visit the New Gerard Buxton Sports Ground on 19th December.

The remaining quarter final draw for the Senior Cup is certainly intriguing, with upset potential in each. Salisbury host Laverstock and Ford in a south Wiltshire derby, while unbeaten County League leaders Trowbridge Town welcome Bemerton Heath Harlequins following their extra time victory against Chippenham Park. For Highworth, who have yet to kick a ball in the competition, it's a home contest against Jeff Roberts' Corsham Town, who have made a strong start to the season in Western League Division One.

Pushing for promotion?

While still only November, it's typically the time of year when the true contenders for promotion get separated from the early season pretenders.

Locally, three sides - Chippenham Town, Swindon Supermarine and Fairford Town - have all made strong starts to their respective campaigns, which they'll need to maintain as winter draws in to make sure they're in position for a spring assault on promotion. Fairford, top of Hellenic League Division One West after a win over previous incumbents Cheltenham Saracens last week, are no doubt best placed of the that trio. Should they reclaim a Premier Division spot after four seasons in Division One, it would provide another local derby for Bassett, which would be beneficial. Supermarine, in the South and West, and Chippenham, in the Premier Division, are both currently on the cusp of the playoffs in their respective Southern League divisions. Neither would be out of place a level higher than they currently ply their trade. It's certainly good to see Chippenham back challenging at the higher end of the Premier Division. After taking the division by storm in the second half of the most recent decade, they've endured a handful of mediocre campaigns. But with renewed vigour under the stewardship of Mark Collier, they're seemingly in good a shape as ever to finally claim a spot in the Conference South.

Now's crunch time for them to prove that though.

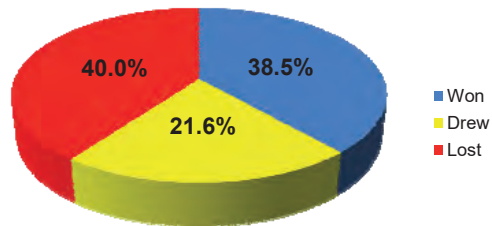
RWBTFC Hellenic Record

WOOTTON BASSETT TOWN F.C. 27 YEARS IN THE HELLENIC LEAGUE

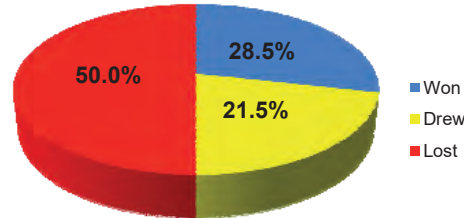
| 22nd | 21st | 20th | 19th | 18th | 17th | 16th | 15th | 14th | 13th | 12th | 11th | 10th | 9th | 8th | 7th | 6th | 5th | 4th | 3rd | 2nd | 1st |
|---------------------|------|-------------------|------|------|------|-------|-------|-------|--------------|----------------------------|---------------------------------|------------|------------------|-----|-----|-----|-----|-----|-----|-----|-----|
| Season | Div | Pld | Won | Drew | Lost | For | Agst | Pts | Position | Manager | Top Scorer | | | | | | | | | | |
| 1988/89 | 1 | 28 | 11 | 7 | 10 | 50 | 41 | 40 | 5 out of 15 | Mick Woolford | Damon York | | | | | | | | | | |
| 1989/90 | 1 | 30 | 13 | 8 | 9 | 52 | 35 | 47 | 7 out of 16 | Mick Woolford | Damon York 25 | | | | | | | | | | |
| 1990/91 | 1 | 30 | 11 | 8 | 11 | 32 | 36 | 41 | 8 out of 16 | Mick Woolford | Damon York | | | | | | | | | | |
| 1991/92 | 1 | 32 | 10 | 8 | 14 | 45 | 59 | 38 | 12 out of 17 | Mick Woolford | Not known | | | | | | | | | | |
| 1992/93 | 1 | 30 | 8 | 6 | 16 | 40 | 53 | 30 | 12 out of 16 | Mick Woolford | Scott Vincent | | | | | | | | | | |
| 1993/94 | 1 | 34 | 15 | 8 | 11 | 65 | 57 | 53 | 9 out of 18 | Mick Woolford | Scott Vincent | | | | | | | | | | |
| 1994/95 | 1 | 38 | 18 | 5 | 15 | 67 | 68 | 59 | 9 out of 20 | Mick Woolford | Scott Vincent/Darren Jell | | | | | | | | | | |
| 1995/96 | 1 | 34 | 12 | 9 | 13 | 50 | 64 | 45 | 10 out of 18 | Kevin Maloney | Scott Vincent | | | | | | | | | | |
| 1996/97 | 1 | 32 | 9 | 8 | 15 | 37 | 50 | 35 | 11 out of 17 | Kevin Maloney | Ian Curtis/Gary Ashford 8 | | | | | | | | | | |
| 1997/98 | 1 | 32 | 12 | 6 | 14 | 67 | 58 | 42 | 10 out of 17 | Dave Warren | Lee Stoddart/Peter Dearlove 10 | | | | | | | | | | |
| 1998/99 | 1 | 32 | 17 | 7 | 8 | 64 | 43 | 58 | 5 out of 17 | Dave Warren | Lee Stoddart 17 | | | | | | | | | | |
| 1999/00 | 1 | 28 | 15 | 7 | 6 | 54 | 32 | 52 | 3 out of 15 | Barry Giles | Lee Stoddart | | | | | | | | | | |
| 2000/01 | P | 38 | 14 | 10 | 14 | 54 | 60 | 52 | 13 out of 20 | Barry Giles | Lee Stoddart 25 | | | | | | | | | | |
| 2001/02 | P | 42 | 9 | 22 | 39 | 75 | 42 | 42 | 19 out of 22 | Pete Yeardley | Mark Vaughan 14 | | | | | | | | | | |
| 2002/03 | P | 40 | 10 | 10 | 20 | 36 | 70 | 40 | 15 out of 21 | Pete Yeardley | Geoff Swatton 9 | | | | | | | | | | |
| 2003/04 | P | 42 | 11 | 5 | 26 | 38 | 73 | 38 | 16 out of 22 | Pete Yeardley | Geoff Swatton 16 | | | | | | | | | | |
| 2004/05 | P | 42 | 6 | 9 | 27 | 30 | 85 | 27 | 21 out of 22 | Pete Yeardley /Chris Jones | Matty Bennett 10 | | | | | | | | | | |
| 2005/06 | 1W | 34 | 17 | 10 | 7 | 58 | 30 | 61 | 5 out of 18 | Paul Burke | Matty Bennett 12 | | | | | | | | | | |
| 2006/07 | 1W | 34 | 14 | 5 | 15 | 64 | 62 | 47 | 11 out of 18 | Paul Burke | Matty Bennett/Steve Yeardley 11 | | | | | | | | | | |
| 2007/08 | 1W | 34 | 11 | 3 | 20 | 43 | 66 | 33 | 15 out of 18 | Paul Burke | Richie Saunders 12 | | | | | | | | | | |
| 2008/09 | 1W | 32 | 17 | 9 | 6 | 61 | 31 | 60 | 4 out of 17 | Dave Turner | Shaun Terry 26 | | | | | | | | | | |
| 2009/10 | 1W | 30 | 20 | 7 | 3 | 74 | 34 | 67 | 2 out of 16 | Dave Turner | Sam Collier 22 | | | | | | | | | | |
| 2010/11 | P | 42 | 13 | 7 | 22 | 55 | 87 | 46 | 15 out of 22 | Dave Turner | Sam Collier 26 | | | | | | | | | | |
| 2011/12 | 1W | 32 | 15 | 7 | 10 | 69 | 47 | 52 | 5 out of 17 | Dave Turner | Matt Bown 18 | | | | | | | | | | |
| 2012/13 | 1W | 30 | 22 | 3 | 5 | 75 | 40 | 66 | 2 out of 16 | Dave Turner | Mark Barnes 32 | | | | | | | | | | |
| 2013/14 | P | 38 | 11 | 12 | 15 | 60 | 60 | 45 | 14 out of 20 | Jeff Roberts | Levi Cox 14 | | | | | | | | | | |
| 2014/15 | P | 38 | 14 | 9 | 15 | 66 | 80 | 51 | 11 out of 20 | Paul Braithwaite | Dan Bailey 18 | | | | | | | | | | |
| 2015/16 | P | 18 | 7 | 2 | 9 | 28 | 38 | 23 | 12 out of 20 | Paul Braithwaite | Steve Robertson 20 | | | | | | | | | | |
| Total | | 946 | 364 | 204 | 378 | 1,473 | 1,534 | 1,290 | | | | Division 1 | Premier Division | | | | | | | | |
| Won:Drew:Lost Ratio | | 38.5% 21.6% 40.0% | | | | | | | | | | | | | | | | | | | |

| Nickname | Bassett |
|-------------------------------------|-----------------------------------|
| Record Gate | 2,103 v Swindon Town (1991) |
| Best Gate - 2014/15 | 102 v Highworth Town |
| Average Hellenic Attendance 2014/15 | 42.8 (13/14 = 40.7) |
| Top Scorer - 2014/15 | Dan Bailey - 18 Goals |
| Record Known Win | 16 - 0 v Clyffe Pypard (1933/34) |
| Record Known Defeat | 1 - 16 v Warminster T (3/11/1945) |

% of Games Won, Drawn & Lost in Hellenic League (Total)



% of Games Won, Drawn & Lost in Hellenic League (Premier Division)



Who will you be today?



Show some Respect

Thousands of referees drop out of the game every season due to abuse.

The uhlsport® Hellenic League operates

ZERO TOLERANCE

towards the use of

'INAPPROPRIATE LANGUAGE & BEHAVIOUR'

Respect



F.A. Cup

THE ROAD TO WEMBLEY FOR WOOTTON BASSETT TOWN F.C.

| Date | Round | Opponents | H/A | Result | Prize Money |
|------------------------------|-------------------------|-----------------------|---------|---------|-------------|
| 15-Aug-15 | Extra Preliminary Round | v Bracknell Town | H | L 0 - 2 | £1,500 |
| 29-Aug-15 | Preliminary Round | v Brimscombe & Thrupp | A | | £1,925 |
| 12-Sep-15 | First Qualifying Round | v Shortwood United | A | | £3,000 |
| 26-Sep-15 | Second Qualifying Round | v Oxford City | A | | £4,500 |
| 14-Oct-15 | Third Qualifying Round | v Bogner Regis Town | A | | £7,500 |
| 24-Oct-15 | Fourth Qualifying Round | v Wealdstone Town | A | | £12,500 |
| 7-Nov-15 | First Round | v Colchester United | H | | £18,000 |
| 5-Dec-15 | Second Round | v Altrincham | H | | £27,000 |
| 9-Jan-16 | Third Round | | | | £67,500 |
| 30-Jan-16 | Fourth Round | | | | £90,000 |
| 20-Feb-16 | Fifth Round | | | | £180,000 |
| 12-Mar-16 | Sixth Round | | | | £360,000 |
| 23-Apr-16 | Semi-Final | | Wembley | | £900,000 |
| 21-May-16 | Final | | Wembley | | £1,800,000 |
| Total Prize Money Won | | | | | £Nil |



Match Reports

Brought back down to earth

New Gerard Buxton Sports Ground, 21st November 2015

After the high of toppling the league leaders, it was the frustration of falling to one of the early season strugglers for Royal Wootton Bassett Town as they slipped to a 2-0 home reverse at the hands of Milton United.

Their defeat to the visiting Miltonians came on an afternoon when Bassett's overall performance didn't necessarily let them down.

However, for all the play they had, they were unable to find the net, seeking too often to try and walk the ball into the net, while countless other chances went begging. If the game had lasted into Sunday, Bassett still probably wouldn't have scored.

Grasping the opportunity this presented, Milton made their hosts pay for their profligacy.

They went ahead on the half hour mark when Harry Dalton, latching onto a ball over the top and noticing 'keeper Luke Kuczynski off his line, smashed a stunning strike from range into the top corner.

Bassett were undone again late on as their desperate attempts to get back on level terms foundered.

Dalton again delivered the goal, putting away at the third attempt after the visitors tore through the home side's defence with seven minutes remaining.

Melksham await in County Cup quarter finals

Royal Wootton Bassett Town have been handed a home tie against Western League Premier Division title holders Melksham Town in the Wiltshire Senior Cup quarter finals.

While no doubt happy to again be drawn at home, Bassett boss Paul Braithwaite, who is hoping to guide his side to the semi finals having been eliminated at the quarter final stage last season, will know his team face a far trickier test than those already faced in the opening two rounds against Ludgershall Sports and New College Swindon.

The game is scheduled to take place at the New Gerard Buxton Sports Ground on Saturday 19th December.

On top of their league crown last season, Melksham lifted the County Cup in both the 2012-13 and 2013-14 campaigns, the latter success taking their overall number of Senior Cup triumphs to seven.

In this year's installment of the competition, Melksham comfortably defeated Westbury United 3-0 in the opening round before defeating 2014-15 runners-up Bradford Town 3-1 in the last sixteen. Their league form has been strong too as they currently sit fourth, and can match current leaders Bristol Manor Farm should they win their three games in hand.

Bassett's last competitive meeting with Melksham was in the third round of the County Cup during the 2006-07 season when Melksham triumphed 1-0 at The Conigre.

Elsewhere, in the Wiltshire County Under 13s Cup, Bassett's Blue side face an away trip to North Wilts League Division One rivals Liden Community White in the third round. That game will take place on Sunday December 13th.

The Under 15 Blues, meanwhile, will host Salisbury City Youth in the third round of the Wiltshire County Under 15s Cup competition on Sunday December 6th.

F.A. Vase

THE ROAD TO WEMBLEY FOR WOOTTON BASSETT TOWN F.C.

| Date | Round | Opponents | H/A | Result | Prize Money |
|------------------------------|-------------------------|------------------------|----------|--------|-------------|
| 5-Sep-15 | First Round Qualifying | v Binfield | H | | £600 |
| 3-Oct-15 | Second Round Qualifying | v Windsor | A | | £800 |
| 31-Oct-15 | First Round Proper | v Croydon | H | | £900 |
| 21-Nov-15 | Second Round Proper | v Hartley Wintney | A | | £1,200 |
| 12-Dec-15 | Third Round Proper | v Colliers Wood United | A | | £1,500 |
| 9-Jan-16 | Fourth Round Proper | | | | £2,000 |
| 30-Jan-16 | Fifth Round Proper | | | | £2,500 |
| 20-Feb-16 | Sixth Round Proper | | | | £4,500 |
| 12-Mar-16 | Semi-final | | Two legs | | £6,000 |
| 22-May-16 | Final | | Wembley | | £25,000 |
| Total Prize Money Won | | | | | £600 |

IT's much more than a game



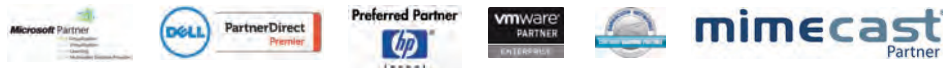
Proud Sponsors of Wootton Bassett Town Football Club

IT CONSULTANCY, SECURITY, INFRASTRUCTURE & TRAINING

01453 338 338
computerworld.co.uk



Apex House, Turner Drive, Westerleigh Business Park, Yate, Bristol, BS37 5YX



Perpetuapress Floodlit Cup

HELLENIC LEAGUE FLOODLIT CUP SPONSORED BY PERPETUA PRINT
SEASON 2015-16

| First Round | | |
|-----------------------------------|-------|-----------------------------|
| Bracknell Town | 4 - 0 | Rayners Lane |
| Highmoor-Ibis | 2 - 0 | Binfield |
| Highworth Town | 0 - 3 | Brackley Town Saints |
| Lydney Town | 2 - 1 | Shortwood United |
| Royal Wootton Bassett Town | 3 - 1 | Fairford Town |
| Shrivenham | 0 - 1 | Carterton |
| Thame United | 4 - 0 | Milton United |
| Thatcham Town | 4 - 2 | Didcot Town |
| Tuffley Rovers | 2 - 4 | Kidlington |

| Second Round | | |
|-----------------------------|-------|-----------------------------------|
| Abingdon United | 3 - 1 | Henley Town |
| Ardley United | 4 - 2 | Hook Norton |
| Brackley Town Saints | 1 - 3 | Lydney Town |
| Bracknell Town | 2 - 3 | Highmoor Ibis |
| Cheltenham Saracens | 1 - 2 | Carterton |
| Chinnor | 2 - 0 | Wokingham & Emmbrook |
| Cirencester Town Dev | 2 - 1 | Longlevens |
| Clanfield | 3 - 2 | Wantage Town |
| Holyport | 1 - 2 | Kidlington |
| New College Swindon | 2 - 1 | Bicester Town |
| North Leigh | v | Brimscombe & Thrupp |
| Oxford City Nomads | 1 - 4 | Thatcham Town |
| Reading Town | 0 - 5 | Ascot United |
| Sandhurst Town | 3 - 7 | Flackwell Heath |
| Tytherington Rocks | 1 - 2 | Royal Wootton Bassett Town |
| Woodley United | 0 - 2 | Thame United |

| Third Round | | |
|------------------------------|-------|-------------------------------|
| Abingdon United | v | Thatcham Town |
| Ardley United | 5 - 0 | New College Swindon |
| Ascot United | 5 - 0 | Chinnor |
| Carterton | 4 - 1 | Highmoor Ibis |
| Cirencester Town Dev | v | North Leigh or Brimscombe & T |
| Kidlington | v | Flackwell Heath |
| Thame United | 3 - 0 | Clanfield |
| Royal Wootton Bassett | v | Lydney Town |

| Quarter Finals | | |
|----------------|---|--|
| | v | |
| | v | |
| | v | |
| | v | |

| Semi Finals | | |
|-------------|---|--|
| | v | |
| | v | |

| Final | | |
|-------|---|--|
| | v | |

Perpetuapress Floodlit Cup



**Printing
solutions**

www.perpetuapress.net

01531 820 816

info@perpetuapress.net

20 Culver Street Newent GL18 1DA



Royal Wootton Bassett Town F. C.

would like to thank our
sponsors for this season:



Senior Section

Gold Sponsor - Steele Davis

Gold Sponsor - Allen & Foxworthy

Gold & Shirt Sponsor - Richard James

**richard
james**
richardjames.info

First Team Shirt Sponsors - Richard James

First Team Training Kit Sponsor - Area Windows

Reserve Team Shirt Sponsor - Richard James

Ladies Team - Roberts & Sons, Aftech and TWB Scrap Metal

U18 Floodlit - Philips Electronics UK Limited

Youth Section

Under 16 - TBA

Under 15 - Colonnade Conservatories Ltd

Under 14 - TBA

Under 13 - TBA

Under 12 - TBA

Under 11 - J.Rouse and Son and Swindon Grab Hire

Under 10 - Bevirs Solicitors

Under 9 - TBA

Under 8 - Homelands Fencing and Landscaping

Under 7 - TBA

Programme Printing & Sponsor - Cats Solutions

All our advertising board sponsors and all our First Team kit player sponsors

Football Pyramid 2015-16

Bluefin Hellenic Challenge Cup

| Step | League/Division | | | | | |
|------|--|--|---|--|---|--|
| 1 | National League (24 clubs) (<i>Vanarama National</i>) | | | | | |
| | Promoted to League Two of The Football League: <i>Champion and winner of 2nd-5th playoff.</i> Relegated to either National League North or National League South: <i>4 clubs.</i> | | | | | |
| 2 | National League North (22 clubs) (<i>Vanarama National North</i>) | | | National League South (22 clubs) (<i>Vanarama National South</i>) | | |
| | Promoted to National League: <i>Champions of each division;</i> <i>the winners of a 2nd-5th playoff in each division will also be promoted.</i> Relegated to Step 3 leagues: <i>3 clubs from each division.</i> | | | | | |
| 3 | Northern Prem. League (24 clubs) (<i>Evo-stick League</i>) Premier Division | | Southern League (24 clubs) (<i>Evo-stick League</i>) Premier Division | | Isthmian League (24 clubs) (<i>Ryman League</i>) Premier Division | |
| | Promoted to National League North or South: <i>Champion and winner of 2nd-5th playoff for each league.</i> Relegated to Step 4 leagues: <i>4 clubs from each league.</i> | | | | | |
| 4 | Northern Premier League (<i>Evo-stick League</i>) Division One North | Northern Premier League (<i>Evo-stick League</i>) Division One South | Southern Football League (<i>Evo-stick League</i>) Division One Central | Southern Football League (<i>Evo-stick League</i>) Division One South & West | Isthmian League (<i>Ryman League</i>) Division One South | Isthmian League (<i>Ryman League</i>) Division One North |
| | *All divisions of 22 clubs except Isthmian League divisions which have 24 teams in each Promoted to Step 3 leagues: <i>Champion and winner of 2nd-5th playoff for each league.</i> Relegated to Step 5 leagues determined by NLS Committee: <i>2 clubs from each league.</i> | | | | | |
| 5 | Combined Counties League Premier Division Eastern Counties League Premier Division Hellenic League Premier Division Southern Counties East League Premier Division Midland League Premier Division Northern Counties East League Premier Division Northern League Division One North West Counties League Premier Spartan South Midlands League Premier Division Southern Combination League Premier Division One United Counties League Premier Division Wessex League Premier Division Western League Premier Division | | | | | |
| | Promoted to Step 4 leagues determined by NLS Committee: <i>Total of 12.</i> Clubs must have applied to the Football Association for promotion to Step Four for the 2016/17 season by 31 December 2015, must then pass ground grading requirements and must finish in the top two places in their league to be eligible for promotion. If there are more clubs applying for promotion than places available, priority is given to champion clubs of the respective leagues. Relegated: <i>Arranged according to separate agreements with Step 6 leagues, as approved by the FA.</i> | | | | | |
| 6 | Combined Counties League - Division One East Midlands Counties League Eastern Counties League - Division One Hellenic League - Division One East Hellenic League - Division One West Kent Invicta League Midland League - Division One Northern Counties East - Division One Northern League - Division Two North West Counties League - Division One Southern Combination League - Division One South West Peninsula League - Premier Division Spartan South Midlands League - Division One United Counties League - Division One Wessex League - Division One West Midlands (Regional) League - Premier Division Western League - Division One | | | | | |
| | Promotion and relegation: <i>Arranged according to separate agreements with appropriate leagues.</i> | | | | | |
| 7 | Anglian Combination - Premier Division Cambridgeshire League - Premier Division Central Midlands League - North Division Central Midlands League - South Division Cheshire League - Premier Division Dorset Premier League Essex Olympian League - Premier Division Essex & Suffolk Border League - Premier Division Gloucestershire County League Hampshire Premier League - Senior Division Hertfordshire Senior County League - Premier Division Humber Premier League - Premier Division Leicestershire Senior League - Premier Division Liverpool County Premier League - Premier Division Manchester League - Premier Division Middlesex County League - Premier Division Midland League - Division Two Northern Alliance - Premier Division Nottinghamshire Senior League - Premier Division Peterborough and District League - Premier Division Sheffield and Hallamshire County Senior League - Premier Division Somerset County League - Premier Division South West Peninsula League - Division One East South West Peninsula League - Division One West Staffordshire County Senior League - Premier Division Suffolk and Ipswich League - Senior Division Wearside Football League West Cheshire Amateur League - Division One West Lancashire League - Premier Division West Yorkshire League - Premier Division Wiltshire Football League | | | | | |
| | Promotion and relegation: <i>Arranged according to separate agreements with appropriate leagues.</i> | | | | | |
| 7A | Northamptonshire Combination League - Premier Division Oxfordshire Senior Football League - Premier Division Thames Valley League - Premier Division Teesside Football League West Midlands (Regional) League - Division One York Football League - Premier Division | | | | | |
| 7B | Bedfordshire County Football League - Premier Division Kent County League - Premier Division Spartan South Midlands League - Division Two Surrey Elite Intermediate League West Riding County Amateur League - Premier Division | | | | | |

HELLENIC LEAGUE CHALLENGE CUP SPONSORED BY BLUEFIN SEASON 2015-16

| First Round | | |
|--------------------------------|-------|------------------------------|
| Ardley United | 1 - 2 | Carterton |
| Ascot United | 1 - 0 | Wokingham & Emmbrook |
| Bracknell Town | 1 - 0 | Chinnor |
| Chalfont Wasps | 0 - 4 | Thatcham Town |
| Cheltenham Saracens | 1 - 2 | Longlevens |
| Cirencester Town Dev' | 2 - 2 | Kidlington (4 - 2 on pens) |
| Fairford Town | 3 - 3 | Highworth Town (3-2 on pens) |
| Flackwell Heath | 3 - 0 | Didcot Town |
| Henley Town | 1 - 2 | Binfield |
| Hook Norton | 2 - 1 | Tytherington Rocks |
| New College Swindon | 5 - 3 | Purton |
| North Leigh United | 2 - 0 | Shrivenham |
| Old Woodstock Town | 0 - 7 | Highmoor Ibis |
| Oxford City Nomads | 4 - 0 | Abingdon United |
| Penn & Tylers Green | 2 - 0 | Bicester Town |
| Rayners Lane | 2 - 1 | Stokenchurch |
| Reading Town | L - W | Holyport |
| Wantage Town | 1 - 8 | Lydney Town |

| Second Round | | |
|-----------------------------|-------|-----------------------------------|
| Brackley Town Saints | 5 - 2 | Headington Amateurs |
| Bracknell Town | 0 - 2 | Royal Wootton Bassett Town |
| Brimscombe & Thrupp | v | Woodley United |
| Cirencester Town Dev | 1 - 0 | Letcombe |
| Finchampstead | 2 - 1 | Fairford Town |
| Flackwell Heath | v | Highmoor Ibis |
| Longlevens | v | Clanfield |
| Milton United | v | Tuffley Rovers |
| Moreton Rangers | 0 - 3 | Binfield |
| New College Swindon | v | Lydney United |
| North Leigh United | v | Thatcham Town |
| Penn & Tylers Green | 0 - 2 | Ascot United |
| Rayners Lane | v | Hook Norton |
| Holyport | 1 - 3 | Oxford City Nomads |
| Shortwood United Res | 2 - 0 | Carterton |
| Thame United | 2 - 0 | Easington Sports |

| Third Round | | |
|-------------|--|--|
| v | | |
| v | | |
| v | | |
| v | | |
| v | | |
| v | | |
| v | | |
| v | | |
| v | | |
| v | | |

| Quarter Finals | | |
|----------------|--|--|
| v | | |
| v | | |
| v | | |
| v | | |

| Semi Finals | | |
|-------------|--|--|
| v | | |
| v | | |

| Final | | |
|-------|--|--|
| v | | |



Bluefin Hellenic Challenge Cup

Football insurance specialists

Our years of experience in the football industry mean we have a unique awareness of the insurance risks faced by associations, leagues, clubs and individuals.

- Property - including stadiums, clubhouses and training facilities
- Personal accident
- Public liability
- Employers liability
- Directors and officers
- Motor fleet
- Construction risks
- Legal expenses
- Prize indemnity/contract bonus
- Failure to broadcast
- Event cancellation

For more information email
or call 0845 872 5060.

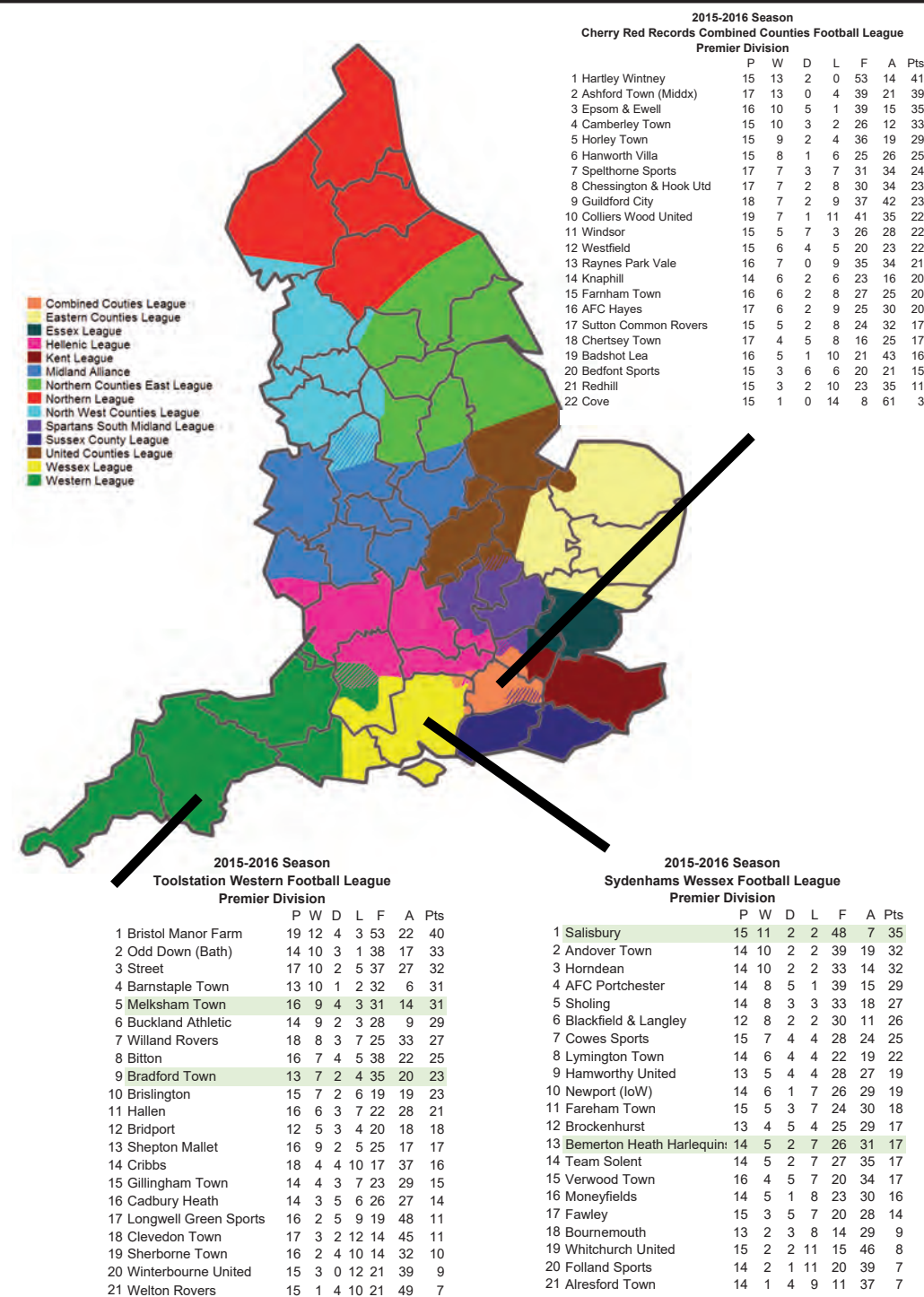
sport@bluefingroup.co.uk

Bluefin
Sport

Bluefin Sport is a trading name of Bluefin Insurance Services Limited which is authorised and regulated by the Financial Services Authority.



Pyramid Levels Steps 5 & 6



Royal Wootton Bassett Town F.C. Season 2015-16 First Team Line-ups, Results and Fixtures

| Date | Opponents | H/A | Result | Crowd | 1 | 2 | 3 | 4 | 5 | 6 | 7 | 8 | 9 | 10 | 11 | 12 | 14 | 15 |
|------------|---------------------------|-----|---------|-------|-----------|----------|-------------|----------|-------------|--------------|-------------|------------|---------------|-------------|--------------|-------------|-------------|----------|
| Sat 08-Aug | Brackley Saints | H | D 1 - 1 | 99 | Meare | Comer | Richards | Wright | Hawkins | Packer | Olphert (1) | Bailey | Youngsam | Sheppard | Carter | Thomas | Scholes | Moulden |
| Wed 12-Aug | Oxford City Nomads | A | W 2 - 0 | 72 | Meare | Comer | Richards | Moulden | Hawkins | Packer | Olphert | Bailey | Youngsam | Corcoran | Carter | Thomas (1) | Scholes (1) | Cheetham |
| Sat 15-Aug | Bracknell (FAC EP) | H | L 0 - 2 | 121 | Meare | Comer | Corcoran | Moulden | Drewitt | Packer | Scholes | Bailey | Youngsam | Sheppard | Carter | Thomas | Richards | Cheetham |
| Wed 20-Aug | Ardley United | H | W 2 - 1 | 92 | Meare | Comer | Richards | Moulden | Drewitt | Packer (1) | Scholes | Bailey (1) | Robertson | Thomas | Carter | Ellis | Skinner | Youngsam |
| Sat 22-Aug | Flackwell Heath | A | L 2 - 7 | 46 | Meare | Comer | Richards | Moulden | Corcoran | Packer | Sheppard | Bailey | Robertson (2) | Yearley | Carter | Youngsam | Gambling | Cheetham |
| Wed 26-Aug | Lydney Town | A | L 2 - 3 | 87 | Meare | Comer | Richards | Hawkins | Corcoran | Packer | Scholes | Bailey | Robertson (1) | Yearley (1) | Carter | Youngsam | Gambling | Olphert |
| Sat 29-Aug | Ascot United | A | W 4 - 1 | 67 | Kuczynski | Comer | Richards | Hawkins | Corcoran | Packer | Scholes | Bailey | Robertson (3) | Yearley | Gambling (1) | Olphert | Sheppard | Carter |
| Mon 31-Aug | Highworth Town | H | L 0 - 2 | 204 | Kuczynski | Comer | Richards | Drewitt | Corcoran | Packer | Scholes | Bailey | Gambling | Yearley | Carter | Youngsam | Hawkins | Cheetham |
| Sat 05-Sep | Binfield (FAV 1st QR) | H | D 1 - 1 | 83 | Meare | Comer | Richards | Hawkins | Corcoran | Packer | Scholes | Bailey | Robertson (1) | Yearley | Youngsam | Thomas | Drewitt | Sheppard |
| Mon 07-Sep | Binfield (FAV 1st QR Rep) | A | W 4 - 3 | 84 | Meare | Comer | Richards | Drewitt | Hawkins (1) | Packer | Scholes (2) | Bailey (1) | Robertson | Cheetham | Olphert | Skinner | Vivash | Sheppard |
| Sat 12-Sep | Thame United | A | L 1 - 3 | 67 | Meare | Comer | Richards | Cheetham | Hawkins | Packer | Scholes | Bailey | Robertson (1) | Yearley | Olphert | Youngsam | Drewitt | Sheppard |
| Wed 16-Sep | Fairford Town (F/L1) | H | W 3 - 1 | 84 | Meare | Comer | Richards | Drewitt | Hawkins | Packer | Scholes | Thomas | Robertson (3) | Yearley | Cheetham | Carter | | |
| Sat 19-Sep | Abingdon United | A | W 4 - 2 | 49 | Meare | Comer | Thomas | Drewitt | Hawkins | Cheetham | Scholes | Bailey | Robertson (3) | Yearley | Olphert (1) | Carter | Sheppard | |
| Mon 21-Sep | Binfield | A | L 0 - 2 | 92 | Meare | Comer | Richards | Drewitt | Hawkins | Packer | Scholes | Bailey | Robertson | Cheetham | Olphert | Carter | Covey | Millar |
| Sat 26-Sep | Wokingham & Emmbrook | H | W 2 - 1 | 58 | Meare | Comer | Yearley | Corcoran | Hawkins | Packer (1) | Scholes | Bailey | Robertson | Cheetham | Olphert (1) | Carter | Drewitt | |
| Tue 29-Sep | Tuffley Rovers | A | D 2 - 2 | 60 | Meare | Richards | Yearley | Corcoran | Hawkins | Packer (1) | Scholes | Bailey | Robertson | Cheetham | Olphert (1) | Thomas | Drewitt | Sheppard |
| Sat 03-Oct | Windsor (FAV 2ndQR) | A | L 1 - 2 | 106 | Kuczynski | Comer | Yearley (1) | Corcoran | Hawkins | Packer | Scholes | Bailey | Richards | Cheetham | Olphert | Thomas | Drewitt | Sheppard |
| Sat 10-Oct | Ludgershall Sports (CC1) | H | W 3 - 1 | 54 | Kuczynski | Comer | Yearley | Corcoran | Hawkins | Thomas | Scholes | Bailey | Robertson (2) | Cheetham | Olphert (1) | Millar | Hiscock | Smith |
| Sat 17-Oct | Abingdon United | H | W 2 - 0 | 78 | Kuczynski | Comer | Yearley | Hiscock | Sinclair | Packer | Scholes | Bailey (1) | Robertson | Cheetham | Olphert(1) | Smith | Walduck | Sheppard |
| Tue 20-Oct | Longlevens | A | L 2 - 3 | 47 | Meare | Comer | Yearley | Corcoran | Hawkins | Packer | Richards | Bailey | Robertson | Cheetham | Olphert | Scholes (1) | Drewitt | |
| Sat 24-Oct | Flackwell Heath | H | L 0 - 3 | 63 | Kuczynski | Comer | Drewitt | Corcoran | Hawkins | Packer | Scholes | Bailey | Hiscock | Cheetham | Olphert | Millar | Sinclair | |
| Mon 26-Oct | Highmoor Ibis | A | L 0 - 4 | 54 | Kuczynski | Comer | Richards | Walduck | Hawkins | Sinclair | Scholes | Bailey | Hiscock | Cheetham | Olphert | Millar | | |
| Wed 04-Nov | Tytherington Rocks (F/L2) | A | W 2 - 1 | 51 | Meare | Comer | Richards | Corcoran | Drewitt | Sheppard (1) | Scholes | Bailey | Hiscock | Cheetham | Olphert | Vivash | Thomas | |
| Sat 07-Nov | New College (CC2) | H | W 4 - 0 | 66 | Meare | Comer | Richards | Drewitt | Hawkins | Sheppard (1) | Scholes | Bailey | Robertson (2) | Packer | Olphert | Hiscock (1) | Thomas | Cheetham |
| Tue 10-Nov | Bracknell Town (BCC2) | A | W 2 - 0 | 82 | Meare | Cheetham | Richards | Drewitt | Hawkins | Thomas | Scholes (1) | Bailey | Robertson (1) | Packer | Olphert | Sheppard | Smith | Vivash |
| Sat 14-Nov | Thatcham Town | A | W 2 - 1 | 96 | Meare | Comer | Cheetham | Drewitt | Hawkins | Corcoran | Scholes (1) | Bailey | Robertson (1) | Packer | Olphert | Thomas | | |
| Sat 21-Nov | Milton United | H | L 0 - 2 | 51 | Kuczynski | Comer | Cheetham | Drewitt | Hawkins | Corcoran | Scholes | Bailey | Robertson | Packer | Olphert | Vivash | Sheppard | Hiscock |
| Sat 28-Nov | Bracknell Town | H | | | | | | | | | | | | | | | | |
| Wed 02-Dec | Lydney Town (F/L3) | H | | | | | | | | | | | | | | | | |
| Sat 05-Dec | Thame United | H | | | | | | | | | | | | | | | | |
| Wed 09-Dec | Kidlington | H | | | | | | | | | | | | | | | | |
| Sat 12-Dec | Melksham Town (CC3) | H | | | | | | | | | | | | | | | | |
| Tue 15-Dec | Brimscombe & Thrupp | A | | | | | | | | | | | | | | | | |
| Sat 19-Dec | Brackley Saints | A | | | | | | | | | | | | | | | | |
| Mon 28-Dec | Highworth Town | A | | | | | | | | | | | | | | | | |
| Sat 02-Jan | Brimscombe & Thrupp | H | | | | | | | | | | | | | | | | |
| Sat 16-Jan | Ardley United | A | | | | | | | | | | | | | | | | |
| Sat 23-Jan | Oxford City Nomads | H | | | | | | | | | | | | | | | | |
| Sat 06-Feb | Wokingham & Emmbrook | A | | | | | | | | | | | | | | | | |
| Sat 13-Feb | Kidlington | A | | | | | | | | | | | | | | | | |
| Wed 17-Feb | Tuffley Rovers | H | | | | | | | | | | | | | | | | |
| Sat 27-Feb | Lydney Town | H | | | | | | | | | | | | | | | | |
| Wed 02-Mar | Highmoor Ibis | H | | | | | | | | | | | | | | | | |
| Sat 05-Mar | Milton United | A | | | | | | | | | | | | | | | | |
| Tue 08-Mar | Bracknell Town | A | | | | | | | | | | | | | | | | |
| Sat 19-Mar | Binfield | H | | | | | | | | | | | | | | | | |
| Sat 26-Mar | Ascot United | H | | | | | | | | | | | | | | | | |
| Mon 28-Mar | Longlevens | H | | | | | | | | | | | | | | | | |
| Sat 02-Apr | Thatcham Town | H | | | | | | | | | | | | | | | | |

FAC - FA Cup, F/L - Floodlight Cup, FAV - FA Vase, CC - County Cup, BICC - Challenge Cup, SC - Supplementary Cup